

2020 Year-End Report



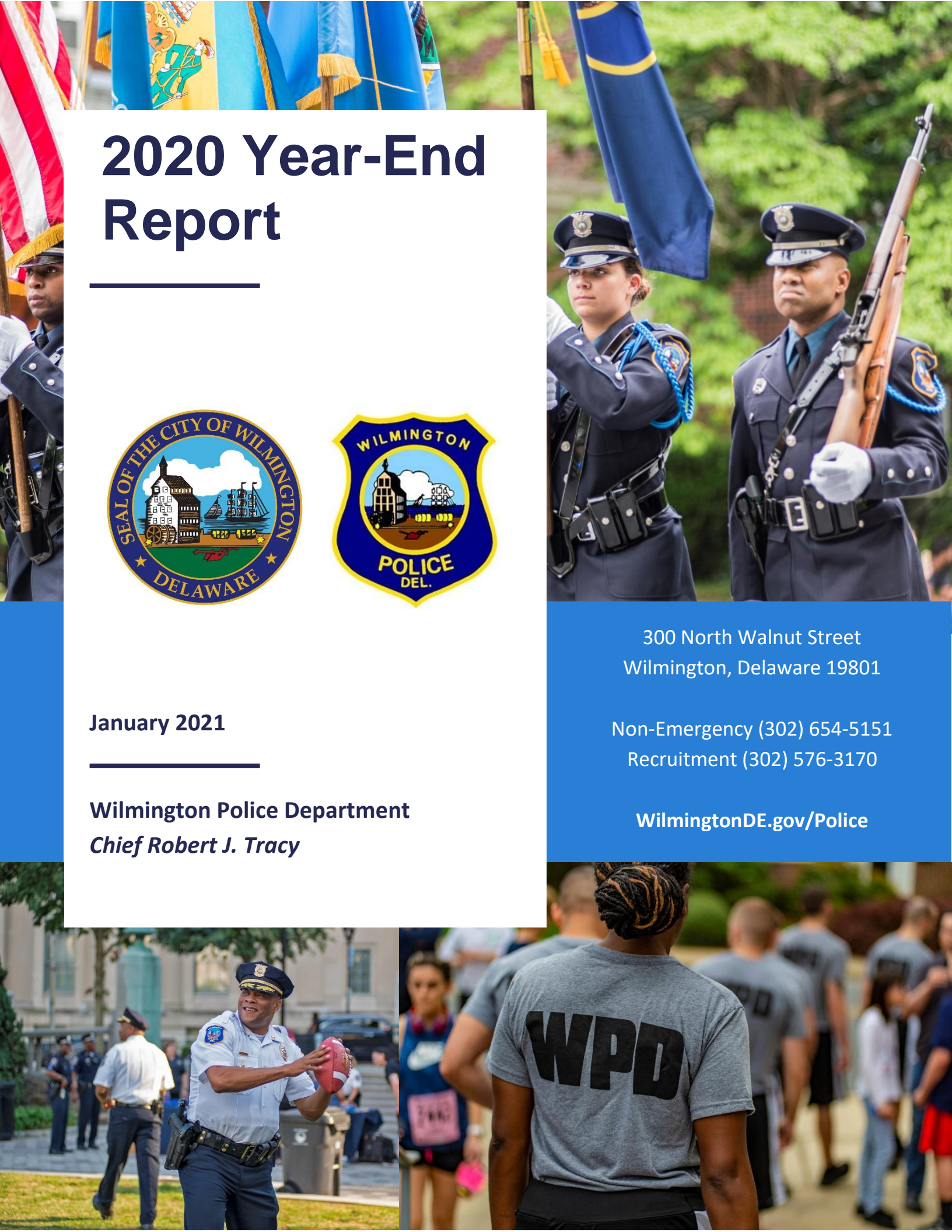
January 2021

Wilmington Police Department
Chief Robert J. Tracy

300 North Walnut Street
Wilmington, Delaware 19801

Non-Emergency (302) 654-5151
Recruitment (302) 576-3170

WilmingtonDE.gov/Police



Introduction from Chief Robert J. Tracy

At the close of the past several years, our department has published preliminary year-end crime statistics along with commentary and details on various initiatives, in addition to regular public announcements about investigative efforts and reports on topics like recruitment. This year, we are presenting this report, a comprehensive document capturing our department's operations throughout calendar year 2020. In the pages that follow, you will find details on various aspects of our department and our efforts – in partnership with the community we serve – to enhance public safety.



Much like the rest of the nation, this past year presented our community with a host of challenges, with the Covid-19 global pandemic being at the forefront. The threat of this health crisis led to significant disruptions in existing societal structures: schools and businesses were closed; community meetings were cancelled; support systems have been strained; and jobs have been lost. Our own city government and police department have been directly touched by Covid-19, and have focused additional efforts on working with health officials to take every precaution to protect our workforce and to support them as they have continued to report to work throughout the pandemic to fulfill our mission of protecting and serving Wilmington. I am enormously proud of each and every member of this department – sworn and civilian – for their resolve in the face of these difficult times, and their continued commitment to our community. I am also proud of how our agency has adapted to the influx of officials, politicians, media and visitors associated with the 2020 Presidential Election and the routine presence of Delaware resident and President-Elect Joseph R. Biden.

In cities across the country, law enforcement executives reported increases in gun violence even amidst reductions in overall crime; we have seen this in Wilmington as well. Our patrol officers, investigators and specialized units have continued to work to identify trends and take action to mobilize and shift resources to adapt to these trends. We have also continued to work with our partners throughout the criminal justice system – prosecutors, court officials and our partner agencies – to share with them the results of our intelligence gathering efforts and ensure we collectively do everything possible to ensure the safety of our communities. Perhaps most importantly, this past year was also one marked by progress. Our agency continues to be among those in the region leading the charge to enhance transparency and to continue to forge stronger bonds with the communities we serve.

I hope this report is useful in providing details about our agency's efforts this year. I know I speak for each of our officers in saying that I look forward to continuing to make progress in our efforts.

Crime Strategies

WPD continues to implement evidence-based strategies

In recent years, the Wilmington Police Department has fundamentally transformed its approach to public safety, with the adoption of proven, evidence-based crime reduction strategies and the embrace of the latest technological tools. The department's core strategies include:

- **Community Policing**, with each and every member of the agency serving as a community policing officer;
- **CompStat Methodology**, applying business management principles to policing to ensure greater levels of focus and accountability;
- **District Integrity**, assigning the same officers to the same neighborhood each time they report for duty;
- **Intelligence-Led Policing**, leveraging the department's Real Time Crime Center to help gather and disseminate intelligence to all personnel;
- **Group Violence Intervention**, blending local, state and federal law enforcement efforts and social service provision into a holistic crime prevention strategy; and
- The **integration of NIBIN firearm and ballistic tracing and analysis** and the **launch of an embedded Crime Gun Intelligence Center** in partnership with the federal Bureau of Alcohol, Tobacco, Firearms and Explosives (ATF).

Each of these core strategies is part of our agency's layered approach to crime reduction, and each has played a role in some of the successes we have seen over the past several years. We also continue to work closely with our local, state and federal colleagues and counterparts to leverage resources to address violence.



The restrictions imposed in relation to Covid-19 and the global health pandemic led to the cancellation of community meetings and other programming that our officers have consistently attended in the past. We have adapted to these challenges, attending community meetings through platforms like Zoom and Skype, and connecting with community leaders and members by email and phone to share information, field concerns and help address issues in our communities.

Notable Achievements

While the year 2020 was one indelibly marked by the Covid-19 pandemic and resulting wide-ranging interruptions throughout our community and nation, our agency has made progress in a number of areas. It is worth noting some of the key achievements – many of which pave the way for continued progress and advancement:



- Our agency released the entirety of its Policy and Procedures Manual, which [is available online for public review and consumption](#)
- We have fully updated and expanded [the Wilmington Police Department website](#), which now includes additional information about the organization of our agency, the services we provide to the public, and resources for the public to learn more about our work
- We have secured substantial grant funding to support the implementation of a Body-Worn Camera program, which will allow us to equip each and every one of our 319 sworn police officers with this technology (more details about our efforts to implement this program are included later in this report)
- We secured funding in the annual budget to allow for the expansion of our neighborhood public safety camera program, as well as additional staffing for our monitoring center
- We worked with city officials to proceed with the application and selection process for our 100th Wilmington Police Academy, with adherence to public health guidance in the way of adjustments to the timeline and adaptations like facilitating meetings using Zoom; we have also expanded our recruitment efforts and have begun issuing quarterly reports capturing these efforts
- We have worked diligently to navigate Covid-19 and to support our employees and the community during these uncertain times:
 - Our command staff has worked closely with health and human resources officials to ensure we take every step to protect the health and safety of our employees, and to support them as they continue to report to work and serve the public
 - Our Support Services Division staff has worked around the clock to ensure adequate personal protective equipment is available for officers and employees
 - Our officers have also visited and paid tribute to medical professionals and other essential workers who have reported to work throughout the duration of the pandemic and who serve our community

Year-End Crime Statistics

Highlights from Year-End CompStat report



Included with this document is a year-end 2020 CompStat report, which captures preliminary data regarding reported offenses in Wilmington for the entirety of the calendar year. While final, official crime statistics for every jurisdiction in the United States are issued by the Federal Bureau of Investigation through its Uniform Crime Reporting Program, those data are often not available until the fall of the following year; that said, [our agency publishes CompStat reports on our website.](#) Those are updated on a weekly basis, with the objective of sharing the data that drives our operations and providing the public with details on reported crimes in Wilmington.

Preliminary year-end 2020 statistics reveal the following general findings:

- **Overall crime** – Wilmington has again seen a reduction in overall major crime categories (murder, rape, robbery, aggravated assault, burglary, felony theft and auto theft), with a 6% reduction in 2020 compared with year-end 2019 totals
- **Murders** – In 2020, there was an increase in murders that parallels what has been reported in cities and communities across the country, as well as in other parts of Delaware
- **Shooting incidents** – Similar to the prior offense category, in 2020 there was an increase in shooting incidents (135 in 2020 compared with 89 in 2019) and shooting victims (168 in 2020 compared with 112 in 2019), which also follows regional and national trends for the past year. You can read more about our efforts to combat this violence, as well as additional data about gun arrests, in the pages that follow
- **Reductions in several categories** – Year-end 2020 data reveals reductions in several offense categories, including rape (46% decrease); robbery (15% decrease); burglary (8% decrease); and felony theft (8% decrease) when compared with 2019 data
- **Reductions in auto thefts** – Year-end data reveals a reduction in auto theft incidents when compared with 2019, with an 11% decrease; the WPD has increased efforts, through public service announcements and personal outreach and engagement by officers, to spread awareness of how vehicle owners and operators can reduce the opportunity for vehicle theft
- **Reductions in misdemeanor thefts** – Year-end 2020 data reveal a 30% reduction in misdemeanor thefts (i.e. package thefts, thefts from vehicles, etc.) when compared with 2019

By the Numbers

Snapshot of key metrics capturing service to our community in 2020

Over the past several years, our department has adopted new technology and has begun to better leverage data to guide operational decisions and the allocation of resources, whether related to crime trends or general management. Below, we include preliminary year-end metrics – with comparisons over a five-year period – that capture various aspects of our agency’s service to the City of Wilmington.

Calls for Service and Community Engagement

This captures the total number of calls for service logged each year, from 2016 through the end of 2020. The second row indicates the combined number of directed patrols (foot patrols) logged by officers and community meetings attended by sworn members of the Wilmington Police Department. It should be noted that Covid-19 restrictions led to the cancellation of most regular, in-person community group meetings.



	2016	2017	2018	2019	2020
Calls for Service	101,178	123,446	120,494	114,956	105,709
Foot Patrols, Community Meetings	7,314	25,638	29,441	25,080	25,737

Clearance Rate for Murder Investigations

Each year, the WPD Criminal Investigations Division records the clearance rate for murder investigations, which is calculated in keeping with the Federal Bureau of Investigation’s Uniform Crime Reporting program and in the same manner as agencies across the country. This rate has generally transcended national averages, particularly as our department has embraced evidence-based crime reduction strategies; adopted new technology; and transformed our approach to law enforcement to ensure that each officer serves as a community policing officer. That said, the final clearance rate for 2020 is reflective of the increased number of incidents that our City experienced, much like cities across the country.

	2016	2017	2018	2019	2020
Clearance Rate for Murder investigations	64%	41%	62%	67%	40%

Victim Services Unit and Youth Response Unit outreach

The WPD Victim Services Unit and Youth Response Unit are teams comprised of civilians who work with victims of violent crime in Wilmington. They provide a wide range of services, including support, crisis counseling and the provision of information and referrals for victims. Victim services professionals can respond to crime scenes around the clock, and help victims navigate the system from the date of an incident through various judicial proceedings. Services are also available for victims of domestic violence, and for Spanish-speaking victims. The WPD Youth Response Unit is a partnership between the Wilmington Police Department, the Delaware Division of Prevention and Behavioral Health Services and A Seed of Hope Counseling. Clinicians on this team work with children and their families to provide free, voluntary trauma assessment and short-term counseling services for those who are victims of, or witnesses to, a traumatic event. The below statistics capture the service provided by these two teams.

	2016	2017	2018	2019	2020
Victim Services – Victim calls	2906	2180	1767	1839	2070
Victim Services – Office/Home/Field Visits	500	477	357	343	243
Victim Services – Court Accompaniments	203	160	84	38	10
Victim Services – Victim Compensation Applications	239	230	144	220	236
Youth Response – Carryover Clients	<i>The Youth Response Unit was established under the Victim Services Unit in 2018</i>		41	66	70
Youth Response – New Clients			44	67	32
Youth Response – Total Referrals			194	167	158

Citizen complaints

The chart below captures the total number of citizen complaints received by our department over the past five years. The WPD Office of Professional Standards [publicly releases an annual report on our website](#) that provides greater detail about citizen complaints that are received, as well as administrative complaints and reviews that are conducted internally, along with final dispositions.

	2016	2017	2018	2019	2020
Citizen Complaints Received (Year-End)	74	77	50	33	20

Gun Arrests

The chart below captures the number of gun arrests made by our agency in 2020, along with comparisons with year-end totals for the past five years. Over the course of this past year, our agency has made a record number of gun arrests – defined here as an incident in which an individual is arrested on gun charges – when compared with prior years:

	2016	2017	2018	2019	2020
Total Gun Arrests	242	210	164	171	307
Juvenile Gun Arrests	37	27	14	20	53

It should be noted that while there were 307 gun arrests, there were only 293 defendants. This is a result of 13 individuals being arrested, by our agency alone, more than once on gun charges in 2020. A deeper analysis of all 2020 gun arrests reveals the following:

Prior gun arrests – A total of 143 of the 293 defendants (48.6%) had prior gun arrests, with 1 having 6 prior gun arrests; 1 having 5 prior gun arrests, 11 having 4 prior gun arrests, 13 having 3 prior gun arrests, 42 having 2 prior gun arrests and 75 having 1 prior gun arrest.



Probation/supervision status – Of the 307 total arrests, in 115 cases the defendant was on some form of probation or pretrial supervision at the time of their arrest on a gun charge.

Prior charges – The 293 defendants collectively have 3,325 felony charges and 5,132 misdemeanor charges.

Juvenile profile – Juveniles accounted for 50 of the 293 defendants and 53 of the 307 gun arrests made in 2020:

- Of the defendants, 20 had prior gun arrests (with one having 5 prior gun arrests alone)
- Of the 53 total arrests, in 35 cases the juvenile defendant was on some form of probation or pretrial supervision at the time of the arrest
- Collectively, the juvenile defendants have 495 felony charges and 545 misdemeanor charges

Current status of defendants – As of the end of December 2020, 124 of the 293 defendants (42%) remained incarcerated. It is worth noting that two have since been killed in shooting incidents following their release. Towards the latter portion of 2020, we have seen high-risk gun offenders increasingly receiving more significant secured or cash-only bail, resulting in incarceration for many of these individuals with the highest propensity for gun violence.

Recruitment Snapshot

WPD continues its year-round efforts to recruit police officers

Throughout the past year, the WPD Human Resources Division – under the leadership of Inspector Charles Emory – has worked diligently to recruit future police officers for Delaware’s largest city. A core component of their work involves seeking to attract diverse candidates interested in a career in law enforcement, in the hopes of continuing to increase the diversity of the agency and its reflectiveness of the community we serve.

These efforts, and accomplishments, include:

- Attending recruiting events and fairs, and leveraging various platforms to spread the word, including:
 - Working with local faith communities, social organizations, businesses and community groups to share information about the application process
 - Leveraging local and regional media coverage
- Successfully launching the 100th Wilmington Police Academy, which is now in progress, including:
 - Managing the application and screening processes amidst Covid-19 health restrictions and guidelines
 - Completing the selection process and planning for the Academy with Covid-19 restrictions in mind
- Expanding the website for the WPD Human Resources Division to include additional information about career opportunities with the Wilmington Police Department, as well as details on the application and selection process. That site now includes a web-based recruitment interest form, which can allow those interested in future hiring processes to share their information so a recruiter can contact them to answer questions and notify them when applications are available for future WPD Police Academy classes
- Refreshing recruitment materials, including brochures and stand-up banners, to reflect the crime strategies our department has adopted; updated career opportunities with our agency; and details on our social media and web platforms
- Developing and issuing quarterly recruitment reports to the Wilmington City Council and the public, which are available for review on our website

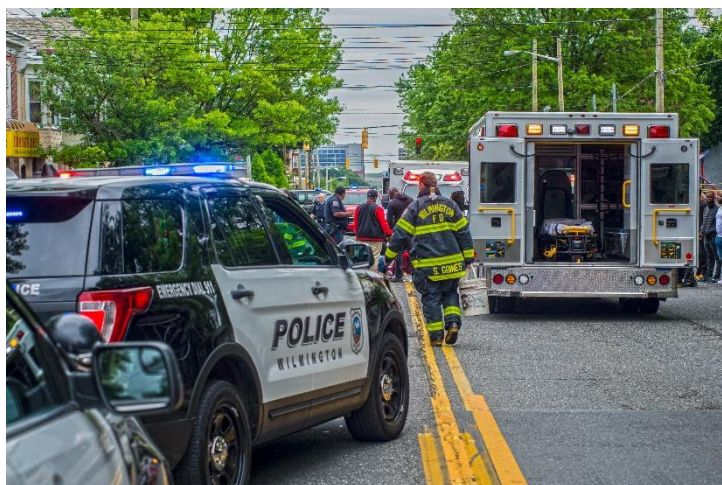


Implementation of Body-Worn Cameras

WPD makes significant progress in adopting this technology

The Wilmington Police Department made significant progress in 2020 in its efforts to adopt and implement a Body-Worn Camera Program. Achievements to date include:

- Developing an implementation plan that encompasses fiscal, operational and staffing considerations, and which is in line with best practices and standards
- Applying for, and successfully being awarded, a federal grant from the United States Department of Justice, Bureau of Justice Assistance, in the amount of \$630,000 to help offset roughly half of the cost of Body-Worn Camera equipment for each of our police officers
- Working with the Administration and City Council to present a budget amendment, which has since been approved and enacted, to allocate funding for the balance of equipment costs and to establish four additional sworn officer positions – one sergeant and three police officers – to administer the department’s Body-Worn Camera Program
- Developing a draft policy to guide administration of the program and use of this technology, and supporting the City Human Resources Department’s efforts to finalize this policy in conjunction with Fraternal Order of Police Lodge #1
- Working with the City Finance Department and procurement staff to embark upon the purchasing process and to order the Body-Worn Camera equipment from Axon
- Selecting a sergeant from among our current staff, to be assigned to lead administration of this program



We have made significant progress, and anticipate completing the next phases in the weeks and months to come:

- Conducting additional training for the officers assigned to manage and administer this program, including training related to the redaction of video in preparation for public release and release pursuant to FOIA requests, legal requests and other purposes
- Finalizing and implementing all applicable policies, in conjunction with the City Human Resources Department and with the support and guidance of the federal Bureau of Justice Assistance to ensure that policies reflect national and evidence-based best practices
- Securing and issuing equipment, and conducting training for all police officers

Looking Forward: Objectives for 2021

The year 2020 was challenging for our community, as well as cities and towns across the country. As we move into 2021, our agency endeavors to continue to implement proven crime reduction strategies in an effort to further enhance public safety in Wilmington. In particular, some of our objectives for the new calendar year include:

- Continuing to navigate the challenges posed by Covid-19 from the perspectives of a public service agency and as an employer, with the dual obligations to continue to serve the public and respond to calls for service while taking steps to ensure the health and safety of our workforce
- Continuing our efforts to recruit the next generation of Wilmington Police officers, with an eye towards furthering the trend of increasing the diversity of our agency
- Fully implementing the department's Body-Worn Camera program



Perhaps one of our most critical objectives in the year to come, is to continue our intensive partnerships and collaborations with partner agencies throughout the criminal justice system – including the New Castle County Police Department; the Delaware State Police; the Delaware Department of Justice; Delaware Probation and Parole; the United States Attorney's Office; our federal partners with the ATF, DEA, FBI and US Marshals Service; and the Delaware Department of Correction, among others. Particularly in the face of increased gun violence and the record number of gun arrests that our agency made in 2020, our agency has enhanced existing collaborations with our partners, holding weekly meetings, establishing around-the-clock communication protocols for intelligence sharing, and conducting joint operations to identify and apprehend those responsible for the majority of this violence. We will continue to leverage these long-standing partnerships in our efforts, and those of our partners, to continue to address those offenders with the highest propensity for committing violent crime and to prevent gun violence.

It is our hope that in the year to come, as our community continues to navigate the Covid-19 pandemic and once public health guidance allows, our neighborhoods might again be able to resume in-person community meetings, public gatherings and other programming. We will continue our efforts to further strengthen relationships with the community we serve, as we endeavor to continue to enhance public safety.

Appendix 1
2020 Year-End CompStat Report



Michael S. Purzycki
Mayor

Volume 4

Wilmington Police Department



Robert J. Tracy
Chief

Citywide

CompStat

Calendar End of Year

CRIME COMPLAINTS

	LAST 7 DAYS			LAST 28 DAYS			YEAR TO DATE			2 YR	3 YR	4 YR	5 YR
	2020	2019	%CHG	2020	2019	%CHG	2020	2019	%CHG	%CHG	%CHG	%CHG	%CHG
Murder	1	2	-50%	3	2	50%	31	23	35%	41%	-11%	15%	19%
Rape	0	0	*	2	0	*	7	13	-46%	-22%	-75%	-78%	-86%
Robbery	5	4	25%	21	26	-19%	270	319	-15%	-19%	-28%	-38%	-36%
Agg. Assault	11	8	38%	27	38	-29%	455	442	3%	2%	1%	-10%	-5%
Burglary	4	10	-60%	25	31	-19%	523	570	-8%	1%	-22%	-34%	-24%
Felony Theft	1	4	-75%	9	20	-55%	253	276	-8%	-15%	-22%	-21%	-20%
Auto Theft	6	6	0%	28	30	-7%	371	415	-11%	-7%	-3%	-19%	20%
TOTAL	28	34	-18%	115	147	-22%	1910	2058	-7%	-6%	-16%	-26%	-17%
Shooting Incidents	3	5	-40%	6	10	-40%	135	89	52%	88%	-18%	8%	3%
Shooting Victims	3	5	-40%	6	10	-40%	168	112	50%	113%	-13%	20%	14%
*Juv Shooting Incidents	1	1	0%	1	2	-50%	31	19	63%	288%	72%	29%	63%
*Juv Shooting Victims	1	1	0%	1	2	-50%	36	21	71%	350%	89%	33%	71%
Theft (Misdemeanor)	16	18	-11%	113	104	9%	1294	1837	-30%	-32%	-35%	-30%	-27%

The above CompStat figures are posted on Monday, two weeks after closing date.

CompStat figures are preliminary and are subject to change through the course of further analysis and review. Crime statistics reflect Delaware Criminal Codes and differ from the crime categories of the FBI Uniform Crime Reporting Program.

* All figures shown in **Juvenile Shooting Incidents** and **Juvenile Shooting Victims** are included in the **Shooting Incidents** and **Shooting Victims**.

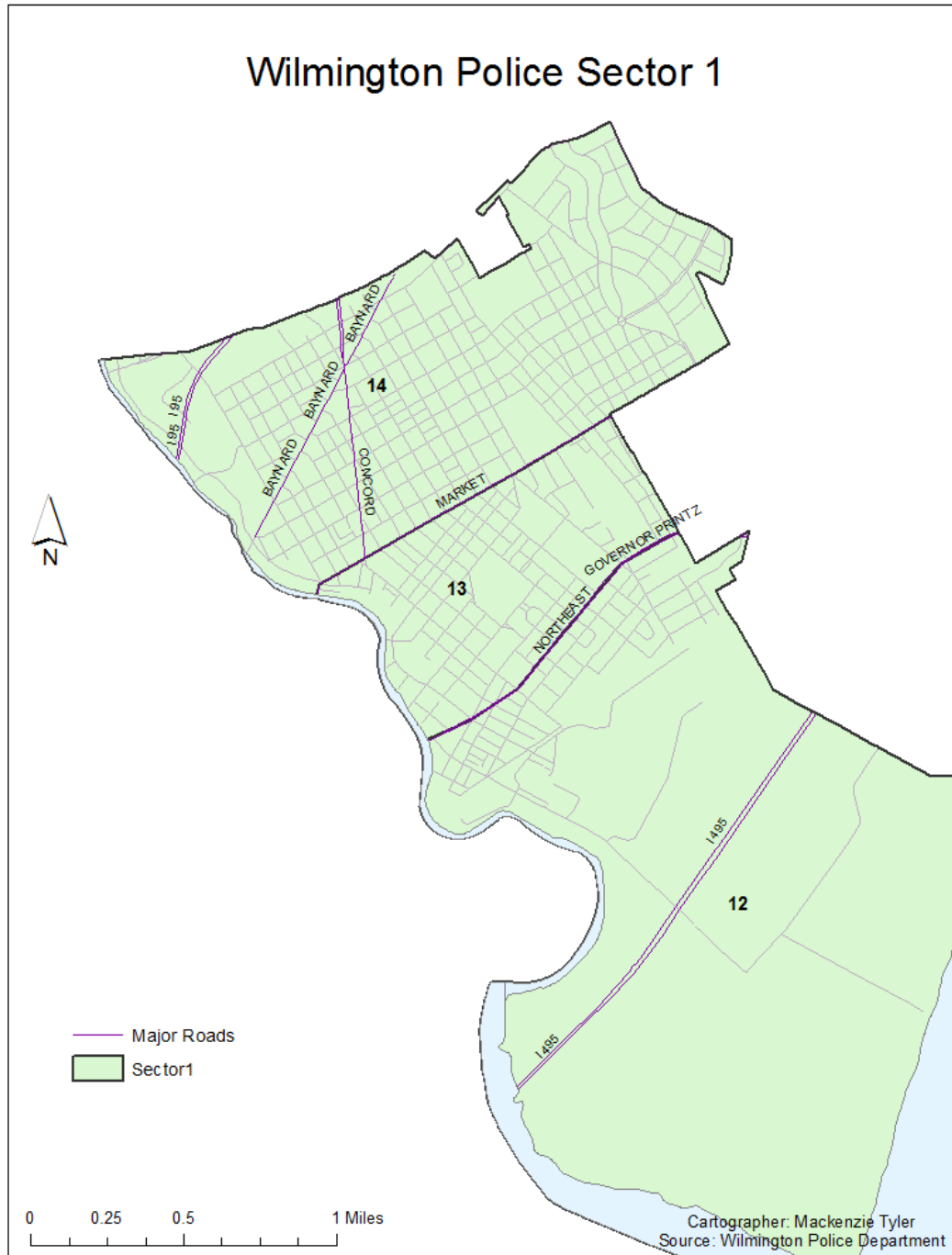


Michael S. Purzycki
Mayor

Wilmington Police Department



Robert J. Tracy
Chief



The above CompStat figures are posted on Monday, two weeks after closing date.

CompStat figures are preliminary and are subject to change through the course of further analysis and review. Crime statistics reflect Delaware Criminal Codes and differ from the crime categories of the FBI Uniform Crime Reporting Program.



Michael S. Purzycki
Mayor

Volume 4

Wilmington Police Department



Robert J. Tracy
Chief

Sector 1

CompStat

Calendar End of Year

CRIME COMPLAINTS

	LAST 7 DAYS			LAST 28 DAYS			YEAR TO DATE			2 YR	3 YR	4 YR	5 YR
	2020	2019	%CHG	2020	2019	%CHG	2020	2019	%CHG	%CHG	%CHG	%CHG	%CHG
Murder	1	2	-50%	2	2	0%	10	11	-9%	0%	0%	11%	-23%
Rape	0	0	*	1	0	*	3	3	0%	0%	100%	-81%	-77%
Robbery	2	2	0%	5	5	0%	76	93	-18%	-25%	-17%	-41%	-24%
Agg. Assault	2	3	-33%	9	15	-40%	160	167	-4%	7%	25%	-1%	23%
Burglary	0	3	-100%	10	11	-9%	150	158	-5%	-16%	-15%	-37%	-14%
Felony Theft	0	0	*	2	2	0%	68	95	-28%	-17%	-16%	-30%	-30%
Auto Theft	3	2	50%	8	10	-20%	116	144	-19%	-21%	-13%	-20%	5%
TOTAL	8	12	-33%	37	45	-18%	583	671	-13%	-13%	-7%	-27%	-8%
Shooting Incidents	1	4	-75%	2	6	-67%	52	41	27%	53%	-19%	13%	2%
Shooting Victims	1	4	-75%	2	6	-67%	65	53	23%	81%	-12%	20%	18%
*Juv Shooting Incidents	0	1	-100%	0	1	-100%	8	14	-43%	60%	33%	-11%	33%
*Juv Shooting Victims	0	1	-100%	0	1	-100%	9	16	-44%	80%	29%	-10%	50%
Theft (Misdemeanor)	3	2	50%	28	17	65%	309	352	-12%	-34%	-37%	-33%	-30%

The above CompStat figures are posted on Monday, two weeks after closing date.

CompStat figures are preliminary and are subject to change through the course of further analysis and review. Crime statistics reflect Delaware Criminal Codes and differ from the crime categories of the FBI Uniform Crime Reporting Program.

* All figures shown in **Juvenile Shooting Incidents** and **Juvenile Shooting Victims** are included in the **Shooting Incidents** and **Shooting Victims**.

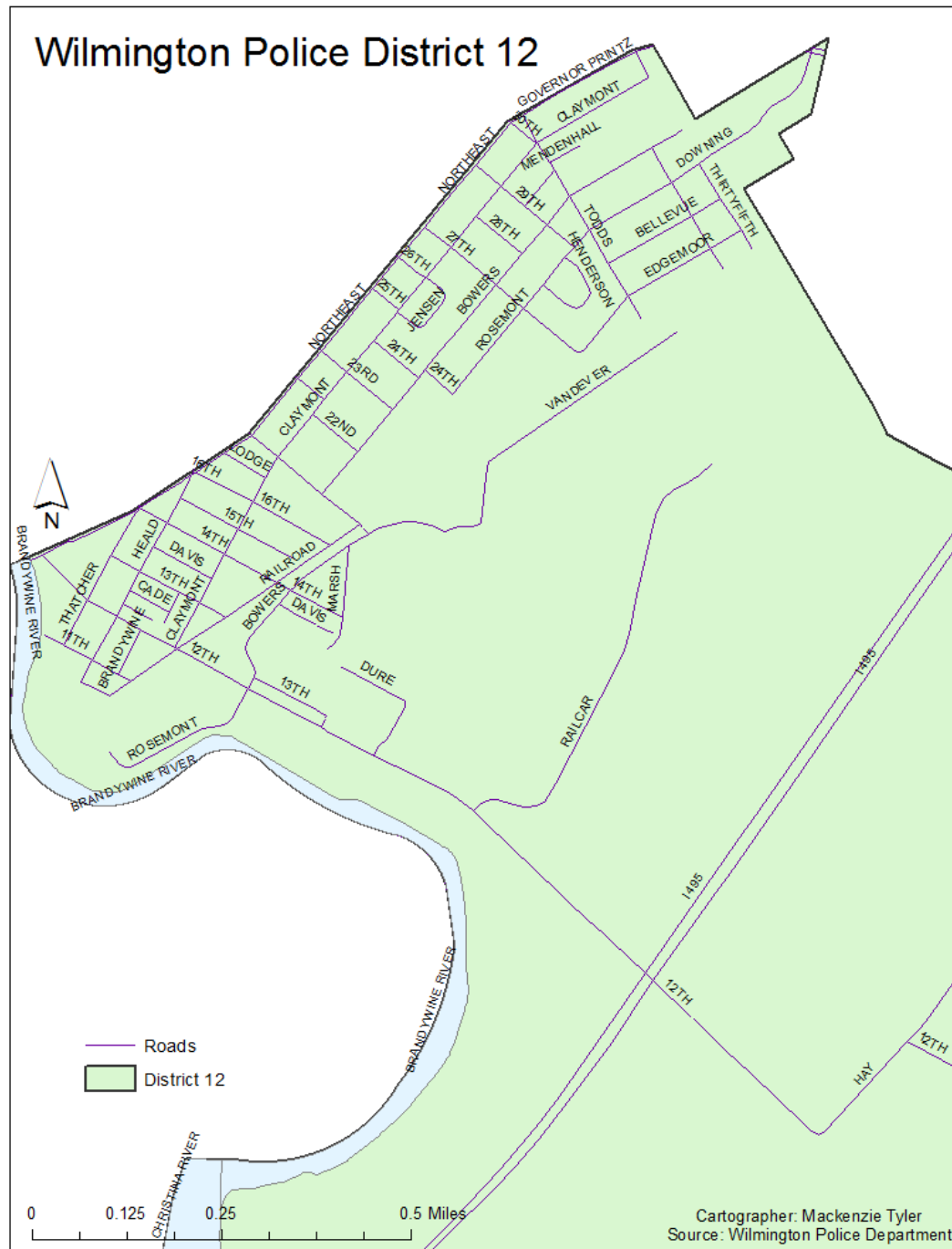


Michael S. Purzycki
Mayor

Wilmington Police Department



Robert J. Tracy
Chief



The above CompStat figures are posted on Monday, two weeks after closing date.

CompStat figures are preliminary and are subject to change through the course of further analysis and review. Crime statistics reflect Delaware Criminal Codes and differ from the crime categories of the FBI Uniform Crime Reporting Program.



Michael S. Purzycki
Mayor

Volume 4

Wilmington Police Department



Robert J. Tracy
Chief

District 12

CompStat

Calendar End of Year

CRIME COMPLAINTS

	LAST 7 DAYS			LAST 28 DAYS			YEAR TO DATE			2 YR	3 YR	4 YR	5 YR
	2020	2019	%CHG	2020	2019	%CHG	2020	2019	%CHG	%CHG	%CHG	%CHG	%CHG
Murder	0	1	-100%	0	1	-100%	1	1	0%	0%	-50%	0%	*
Rape	0	0	*	0	0	*	0	0	*	-100%	-100%	-100%	-100%
Robbery	1	1	0%	1	1	0%	7	20	-65%	-56%	-36%	-67%	-22%
Agg. Assault	0	1	-100%	2	4	-50%	22	30	-27%	0%	57%	22%	57%
Burglary	0	0	*	2	0	*	21	20	5%	17%	24%	-9%	75%
Felony Theft	0	0	*	0	0	*	4	14	-71%	-69%	-64%	0%	-33%
Auto Theft	1	0	*	1	1	0%	11	17	-35%	-50%	-39%	-42%	-21%
TOTAL	2	3	-33%	6	7	-14%	66	102	-35%	-30%	-13%	-26%	16%
Shooting Incidents	0	1	-100%	0	1	-100%	6	4	50%	50%	-25%	20%	0%
Shooting Victims	0	1	-100%	0	1	-100%	9	6	50%	125%	-25%	80%	50%
*Juv Shooting Incidents	0	0	*	0	0	*	1	1	0%	*	-50%	*	0%
*Juv Shooting Victims	0	0	*	0	0	*	2	1	100%	*	0%	*	100%
Theft (Misdemeanor)	1	0	*	4	4	0%	46	65	-29%	-16%	-43%	18%	-23%

The above CompStat figures are posted on Monday, two weeks after closing date.

CompStat figures are preliminary and are subject to change through the course of further analysis and review. Crime statistics reflect Delaware Criminal Codes and differ from the crime categories of the FBI Uniform Crime Reporting Program.

* All figures shown in **Juvenile Shooting Incidents** and **Juvenile Shooting Victims** are included in the **Shooting Incidents** and **Shooting Victims**.

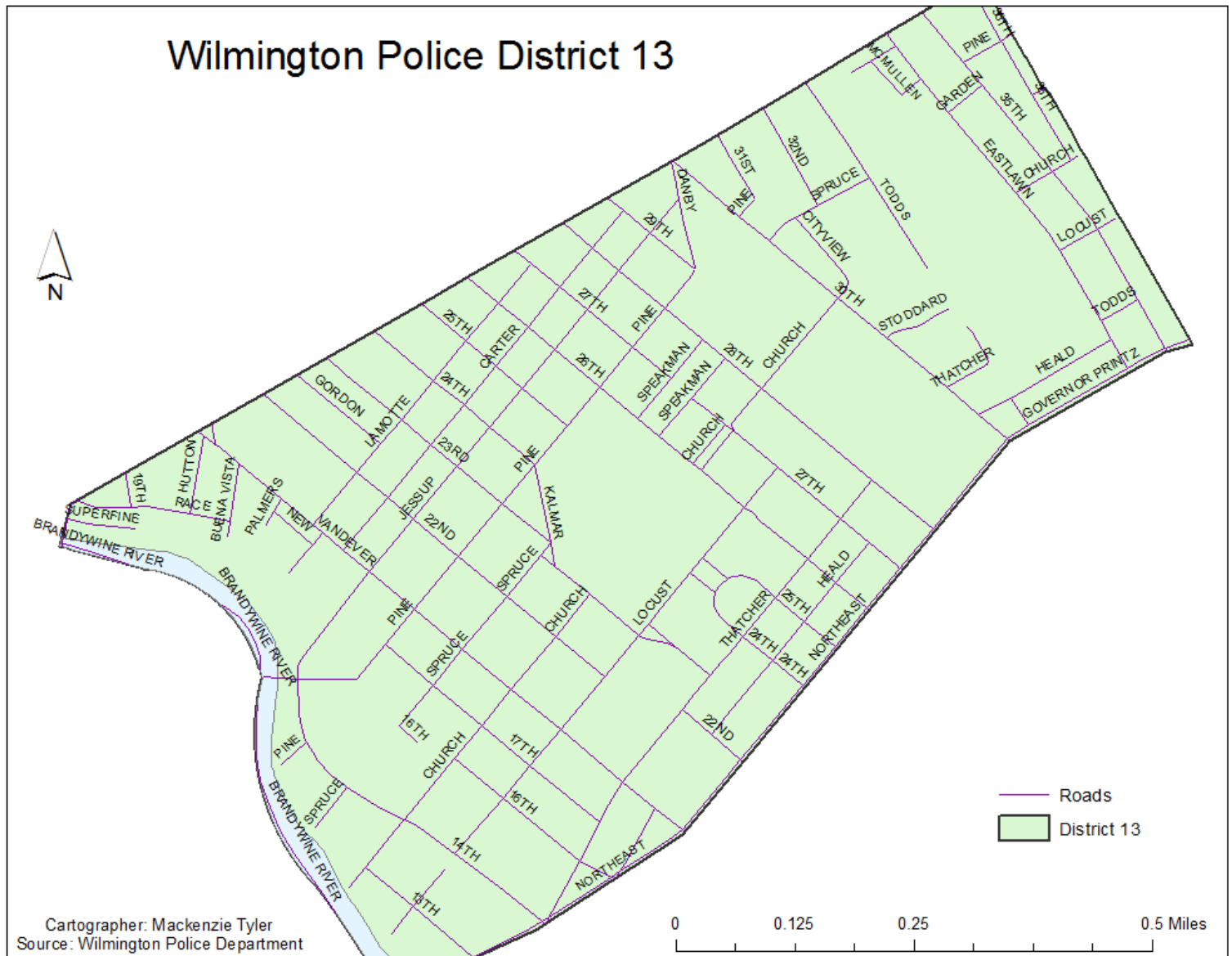


Michael S. Purzycki
Mayor

Wilmington Police Department



Robert J. Tracy
Chief



The above CompStat figures are posted on Monday, two weeks after closing date.

CompStat figures are preliminary and are subject to change through the course of further analysis and review. Crime statistics reflect Delaware Criminal Codes and differ from the crime categories of the FBI Uniform Crime Reporting Program.



Michael S. Purzycki
Mayor

Volume 4

Wilmington Police Department



Robert J. Tracy
Chief

District 13

CompStat

Calendar End of Year

CRIME COMPLAINTS

	LAST 7 DAYS			LAST 28 DAYS			YEAR TO DATE			2 YR	3 YR	4 YR	5 YR
	2020	2019	%CHG	2020	2019	%CHG	2020	2019	%CHG	%CHG	%CHG	%CHG	%CHG
Murder	1	1	0%	2	1	100%	9	6	50%	13%	200%	125%	13%
Rape	0	0	*	0	0	*	0	2	-100%	-100%	-100%	-100%	-100%
Robbery	0	1	-100%	0	3	-100%	27	35	-23%	-25%	-29%	-51%	-40%
Agg. Assault	0	1	-100%	1	5	-80%	58	50	16%	-15%	-8%	4%	16%
Burglary	0	2	-100%	4	6	-33%	51	53	-4%	-32%	-18%	-34%	-9%
Felony Theft	0	0	*	1	1	0%	24	23	4%	71%	9%	-29%	-23%
Auto Theft	0	0	*	3	2	50%	37	36	3%	-20%	-3%	-16%	0%
TOTAL	1	5	-80%	11	18	-39%	206	205	0%	-17%	-10%	-25%	-11%
Shooting Incidents	1	2	-50%	2	3	-33%	25	19	32%	25%	-11%	92%	0%
Shooting Victims	1	2	-50%	2	3	-33%	32	21	52%	45%	3%	129%	14%
*Juv Shooting Incidents	0	0	*	0	0	*	1	2	-50%	-67%	-50%	0%	-75%
*Juv Shooting Victims	0	0	*	0	0	*	1	2	-50%	-67%	-67%	0%	-75%
Theft (Misdemeanor)	0	0	*	4	6	-33%	69	96	-28%	-52%	-51%	-53%	-52%

The above CompStat figures are posted on Monday, two weeks after closing date.

CompStat figures are preliminary and are subject to change through the course of further analysis and review. Crime statistics reflect Delaware Criminal Codes and differ from the crime categories of the FBI Uniform Crime Reporting Program.

* All figures shown in **Juvenile Shooting Incidents** and **Juvenile Shooting Victims** are included in the **Shooting Incidents** and **Shooting Victims**.

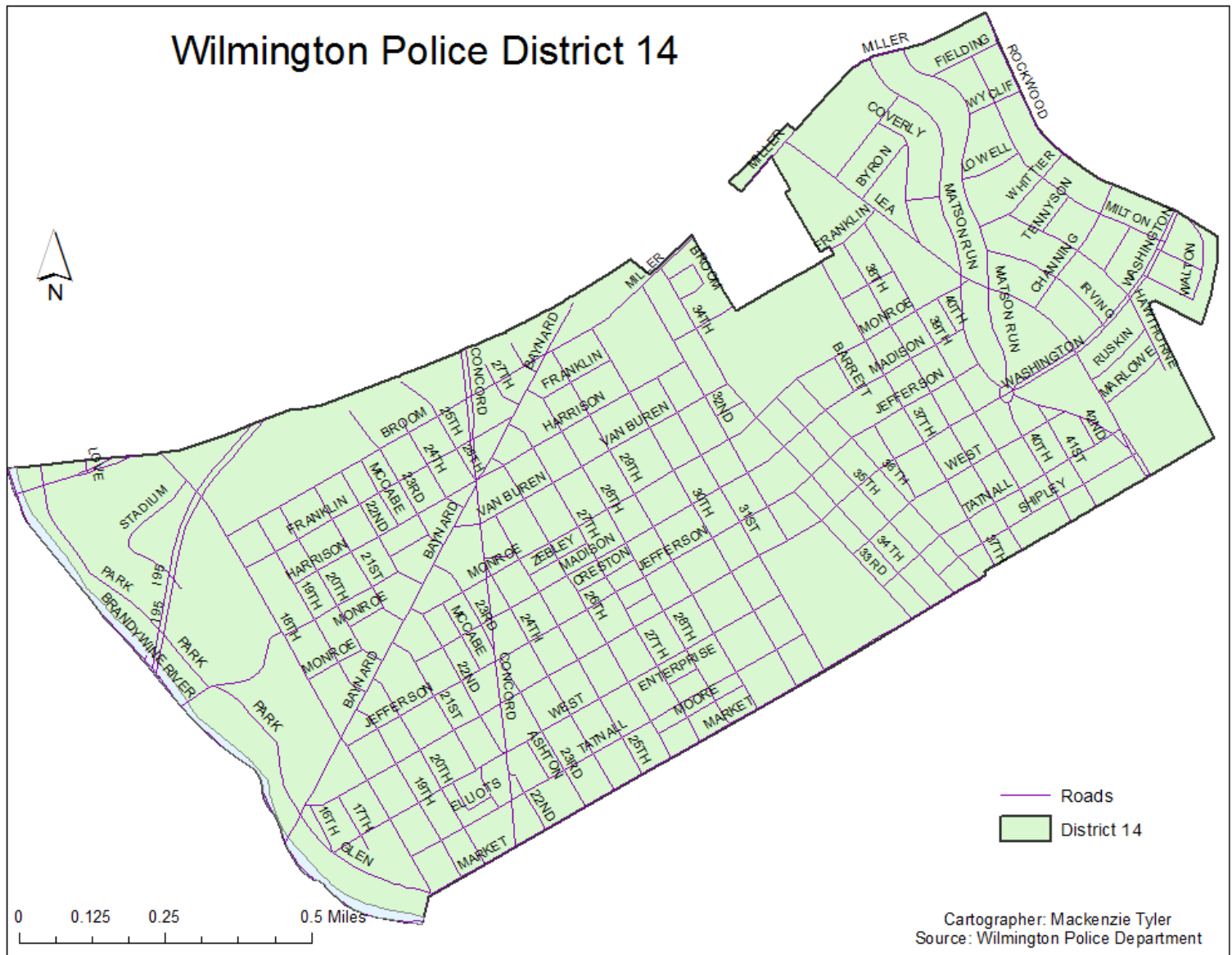


Michael S. Purzycki
Mayor

Wilmington Police Department



Robert J. Tracy
Chief



The above CompStat figures are posted on Monday, two weeks after closing date.

CompStat figures are preliminary and are subject to change through the course of further analysis and review. Crime statistics reflect Delaware Criminal Codes and differ from the crime categories of the FBI Uniform Crime Reporting Program.



Michael S. Purzycki
Mayor

Volume 4

Wilmington Police Department



Robert J. Tracy
Chief

District 14

CompStat

Calendar End of Year

CRIME COMPLAINTS

	LAST 7 DAYS			LAST 28 DAYS			YEAR TO DATE			2 YR	3 YR	4 YR	5 YR
	2020	2019	%CHG	2020	2019	%CHG	2020	2019	%CHG	%CHG	%CHG	%CHG	%CHG
Murder	0	0	*	0	0	*	0	4	-100%	-100%	-100%	-100%	-100%
Rape	0	0	*	1	0	*	3	1	200%	*	*	-63%	-50%
Robbery	1	0	*	4	1	50%	42	38	11%	-16%	-2%	-21%	-9%
Agg. Assault	2	1	100%	6	6	0%	80	87	-8%	36%	57%	-8%	21%
Burglary	0	1	-100%	4	5	-20%	78	85	-8%	-8%	-20%	-43%	-26%
Felony Theft	0	0	*	1	1	0%	40	58	-31%	-27%	-17%	-32%	-33%
Auto Theft	2	2	0%	4	7	-43%	68	91	-25%	-14%	-13%	-17%	15%
TOTAL	5	4	25%	20	20	0%	311	364	-15%	-5%	-4%	-28%	-11%
Shooting Incidents	0	1	-100%	0	2	-100%	21	18	17%	110%	-25%	-25%	5%
Shooting Victims	0	1	-100%	0	2	-100%	24	26	-8%	140%	-23%	-31%	14%
*Juv Shooting Incidents	0	1	-100%	0	1	-100%	6	11	-45%	200%	200%	-25%	500%
*Juv Shooting Victims	0	1	-100%	0	1	-100%	6	13	-54%	200%	200%	-33%	500%
Theft (Misdemeanor)	2	2	0%	20	7	186%	194	191	2%	-28%	-28%	-30%	-18%

The above CompStat figures are posted on Monday, two weeks after closing date.

CompStat figures are preliminary and are subject to change through the course of further analysis and review. Crime statistics reflect Delaware Criminal Codes and differ from the crime categories of the FBI Uniform Crime Reporting Program.

* All figures shown in **Juvenile Shooting Incidents** and **Juvenile Shooting Victims** are included in the **Shooting Incidents** and **Shooting Victims**.



Michael S. Purzycki
Mayor

Wilmington Police Department



Robert J. Tracy
Chief



The above CompStat figures are posted on Monday, two weeks after closing date.

CompStat figures are preliminary and are subject to change through the course of further analysis and review. Crime statistics reflect Delaware Criminal Codes and differ from the crime categories of the FBI Uniform Crime Reporting Program.



Michael S. Purzycki
Mayor

Volume 4

Wilmington Police Department



Robert J. Tracy
Chief

Sector 2

CompStat

Calendar End of Year

CRIME COMPLAINTS

	LAST 7 DAYS			LAST 28 DAYS			YEAR TO DATE			2 YR	3 YR	4 YR	5 YR
	2020	2019	%CHG	2020	2019	%CHG	2020	2019	%CHG	%CHG	%CHG	%CHG	%CHG
Murder	0	0	*	0	0	*	12	5	140%	100%	9%	33%	50%
Rape	0	0	*	0	0	*	3	6	-50%	-25%	-77%	-63%	-84%
Robbery	2	1	100%	9	8	13%	97	110	-12%	-24%	-34%	-39%	-35%
Agg. Assault	7	3	133%	9	12	-25%	169	153	10%	12%	-7%	-11%	-4%
Burglary	0	3	-100%	2	7	-71%	162	162	0%	27%	-29%	-30%	-19%
Felony Theft	0	2	-100%	3	8	-63%	84	90	-7%	-25%	-21%	1%	2%
Auto Theft	2	2	0%	8	10	-20%	113	118	-4%	14%	9%	-8%	59%
TOTAL	11	11	0%	31	45	-31%	640	644	-1%	2%	-19%	-20%	-9%
Shooting Incidents	2	0	*	2	1	100%	52	29	79%	189%	0%	27%	13%
Shooting Victims	2	0	*	2	1	100%	63	38	66%	200%	5%	50%	21%
*Juv Shooting Incidents	1	0	*	1	0	*	15	2	650%	*	88%	88%	150%
*Juv Shooting Victims	1	0	*	1	0	*	19	2	850%	*	138%	138%	217%
Theft (Misdemeanor)	4	6	-33%	34	38	-11%	393	654	-40%	-43%	-40%	-34%	-29%

The above CompStat figures are posted on Monday, two weeks after closing date.

CompStat figures are preliminary and are subject to change through the course of further analysis and review. Crime statistics reflect Delaware Criminal Codes and differ from the crime categories of the FBI Uniform Crime Reporting Program.

* All figures shown in **Juvenile Shooting Incidents** and **Juvenile Shooting Victims** are included in the **Shooting Incidents** and **Shooting Victims**.

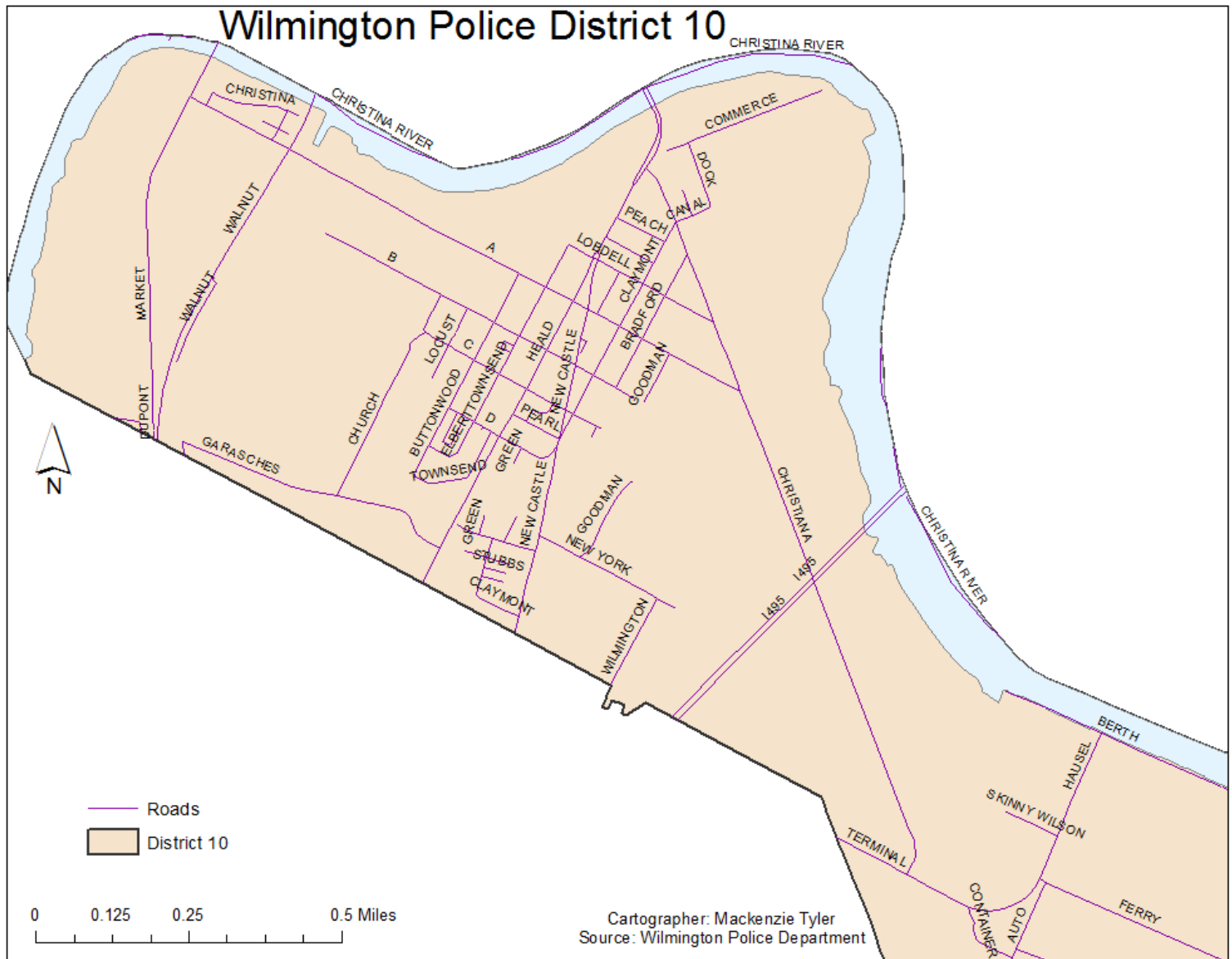


Michael S. Purzycki
Mayor

Wilmington Police Department



Robert J. Tracy
Chief



The above CompStat figures are posted on Monday, two weeks after closing date.

CompStat figures are preliminary and are subject to change through the course of further analysis and review. Crime statistics reflect Delaware Criminal Codes and differ from the crime categories of the FBI Uniform Crime Reporting Program.



Michael S. Purzycki
Mayor

Volume 4

Wilmington Police Department



Robert J. Tracy
Chief

District 10

CompStat

Calendar End of Year

CRIME COMPLAINTS

	LAST 7 DAYS			LAST 28 DAYS			YEAR TO DATE			2 YR	3 YR	4 YR	5 YR
	2020	2019	%CHG	2020	2019	%CHG	2020	2019	%CHG	%CHG	%CHG	%CHG	%CHG
Murder	0	0	*	0	0	*	0	0	*	*	*	*	*
Rape	0	0	*	0	0	*	0	0	*	*	-100%	-100%	-100%
Robbery	0	0	*	0	1	-100%	10	15	-33%	-41%	-23%	-29%	-9%
Agg. Assault	0	0	*	0	2	-100%	14	17	-18%	27%	-30%	17%	8%
Burglary	0	1	-100%	0	1	-100%	18	26	-31%	-10%	-47%	-54%	-18%
Felony Theft	0	0	*	0	0	*	8	9	-11%	33%	33%	0%	60%
Auto Theft	1	0	*	1	1	0%	20	20	0%	122%	186%	43%	67%
TOTAL	1	1	0%	1	5	-80%	70	87	-20%	11%	-15%	-20%	9%
Shooting Incidents	0	0	*	0	1	-100%	4	2	100%	*	-56%	*	-33%
Shooting Victims	0	0	*	0	1	-100%	4	2	100%	*	-56%	*	-33%
*Juv Shooting Incidents	0	0	*	0	0	*	1	0	*	*	0%	*	-50%
*Juv Shooting Victims	0	0	*	0	0	*	1	0	*	*	0%	*	-50%
Theft (Misdemeanor)	1	2	-50%	2	7	-71%	50	83	-40%	-43%	-34%	-44%	-26%

The above CompStat figures are posted on Monday, two weeks after closing date.

CompStat figures are preliminary and are subject to change through the course of further analysis and review. Crime statistics reflect Delaware Criminal Codes and differ from the crime categories of the FBI Uniform Crime Reporting Program.

* All figures shown in **Juvenile Shooting Incidents** and **Juvenile Shooting Victims** are included in the **Shooting Incidents** and **Shooting Victims**.



Michael S. Purzycki
Mayor

Wilmington Police Department



Robert J. Tracy
Chief



The above CompStat figures are posted on Monday, two weeks after closing date.

CompStat figures are preliminary and are subject to change through the course of further analysis and review. Crime statistics reflect Delaware Criminal Codes and differ from the crime categories of the FBI Uniform Crime Reporting Program.



Michael S. Purzycki
Mayor

Volume 4

Wilmington Police Department



Robert J. Tracy
Chief

District 11

CompStat

Calendar End of Year

CRIME COMPLAINTS

	LAST 7 DAYS			LAST 28 DAYS			YEAR TO DATE			2 YR	3 YR	4 YR	5 YR
	2020	2019	%CHG	2020	2019	%CHG	2020	2019	%CHG	%CHG	%CHG	%CHG	%CHG
Murder	0	0	*	0	0	*	7	2	250%	133%	40%	0%	600%
Rape	0	0	*	0	0	*	0	3	-100%	-100%	-100%	-100%	-100%
Robbery	2	0	*	4	4	0%	35	46	-24%	-15%	-26%	-46%	-44%
Agg. Assault	2	1	100%	2	3	-33%	76	60	27%	19%	-4%	-17%	0%
Burglary	0	0	*	1	2	-50%	75	66	14%	44%	-31%	-22%	-18%
Felony Theft	0	2	-100%	2	3	-33%	34	24	42%	-19%	-11%	36%	48%
Auto Theft	0	1	-100%	0	2	-100%	44	43	2%	10%	-17%	-8%	38%
TOTAL	4	4	0%	9	14	-36%	271	244	11%	11%	-20%	-20%	-7%
Shooting Incidents	2	0	*	2	0	*	25	12	108%	213%	25%	0%	92%
Shooting Victims	2	0	*	2	0	*	33	18	83%	230%	50%	32%	136%
*Juv Shooting Incidents	1	0	*	1	0	*	9	1	800%	*	50%	80%	800%
*Juv Shooting Victims	1	0	*	1	0	*	13	1	1200%	*	117%	160%	1200%
Theft (Misdemeanor)	1	1	0%	8	10	-20%	109	230	-53%	-49%	-49%	-41%	-45%

The above CompStat figures are posted on Monday, two weeks after closing date.

CompStat figures are preliminary and are subject to change through the course of further analysis and review. Crime statistics reflect Delaware Criminal Codes and differ from the crime categories of the FBI Uniform Crime Reporting Program.

* All figures shown in **Juvenile Shooting Incidents** and **Juvenile Shooting Victims** are included in the **Shooting Incidents** and **Shooting Victims**.

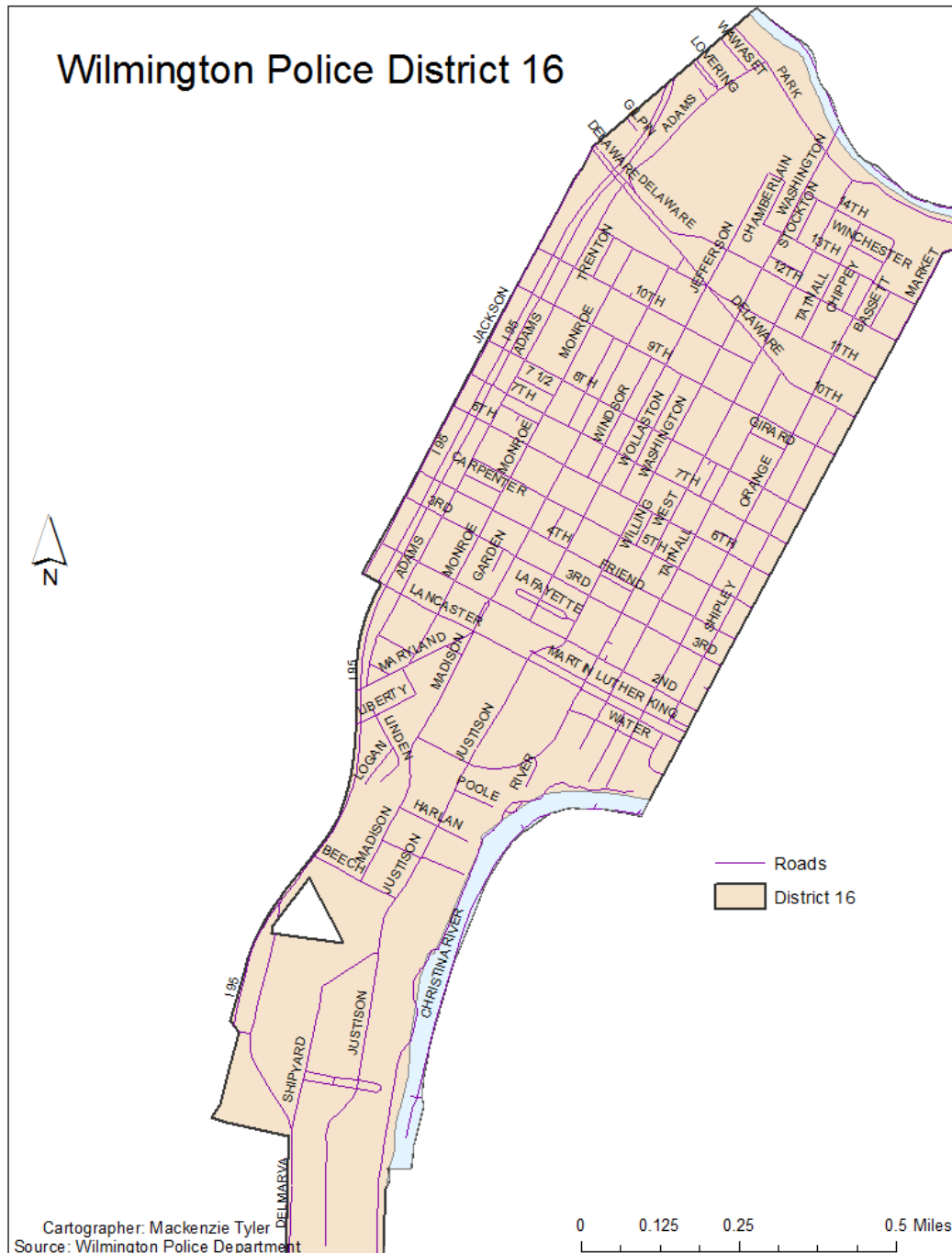


Michael S. Purzycki
Mayor

Wilmington Police Department



Robert J. Tracy
Chief



The above CompStat figures are posted on Monday, two weeks after closing date.

CompStat figures are preliminary and are subject to change through the course of further analysis and review. Crime statistics reflect Delaware Criminal Codes and differ from the crime categories of the FBI Uniform Crime Reporting Program.



Michael S. Purzycki
Mayor

Volume 4

Wilmington Police Department



Robert J. Tracy
Chief

District 16

CompStat

Calendar End of Year

CRIME COMPLAINTS

	LAST 7 DAYS			LAST 28 DAYS			YEAR TO DATE			2 YR	3 YR	4 YR	5 YR
	2020	2019	%CHG	2020	2019	%CHG	2020	2019	%CHG	%CHG	%CHG	%CHG	%CHG
Murder	0	0	*	0	0	*	5	3	67%	67%	-17%	150%	-29%
Rape	0	0	*	0	0	*	3	3	0%	200%	-25%	0%	-75%
Robbery	0	1	-100%	5	3	67%	52	49	6%	-25%	-40%	-36%	-32%
Agg. Assault	5	2	150%	7	7	0%	79	76	4%	4%	-5%	-7%	-9%
Burglary	0	2	-100%	1	4	-75%	69	70	-1%	23%	-21%	-27%	-22%
Felony Theft	0	0	*	1	5	-80%	42	57	-26%	-34%	-33%	-16%	-22%
Auto Theft	1	1	0%	7	7	0%	49	55	-11%	-2%	11%	-20%	81%
TOTAL	6	6	0%	21	26	-19%	299	313	-4%	-6%	-20%	-21%	-15%
Shooting Incidents	0	0	*	0	0	*	23	15	53%	130%	0%	44%	-15%
Shooting Victims	0	0	*	0	0	*	26	18	44%	136%	-10%	53%	-19%
*Juv Shooting Incidents	0	0	*	0	0	*	5	1	400%	*	400%	67%	67%
*Juv Shooting Victims	0	0	*	0	0	*	5	1	400%	*	400%	67%	67%
Theft (Misdemeanor)	2	3	-33%	24	21	14%	234	341	-31%	-39%	-36%	-27%	-19%

The above CompStat figures are posted on Monday, two weeks after closing date.

CompStat figures are preliminary and are subject to change through the course of further analysis and review. Crime statistics reflect Delaware Criminal Codes and differ from the crime categories of the FBI Uniform Crime Reporting Program.

* All figures shown in **Juvenile Shooting Incidents** and **Juvenile Shooting Victims** are included in the **Shooting Incidents** and **Shooting Victims**.

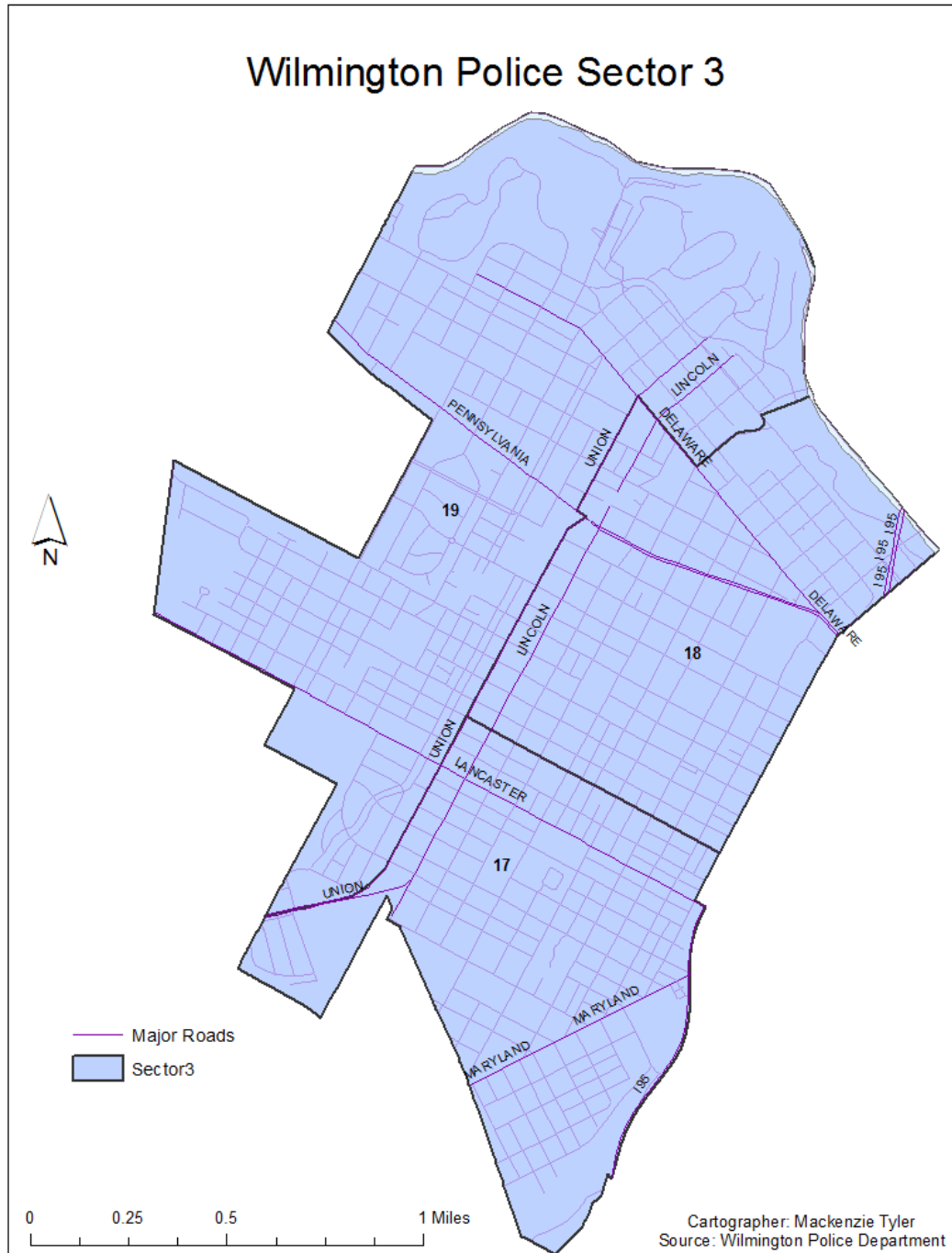


Michael S. Purzycki
Mayor

Wilmington Police Department



Robert J. Tracy
Chief



The above CompStat figures are posted on Monday, two weeks after closing date.

CompStat figures are preliminary and are subject to change through the course of further analysis and review. Crime statistics reflect Delaware Criminal Codes and differ from the crime categories of the FBI Uniform Crime Reporting Program.



Michael S. Purzycki
Mayor

Volume 4

Wilmington Police Department



Robert J. Tracy
Chief

Sector 3

CompStat

Calendar End of Year

CRIME COMPLAINTS

	LAST 7 DAYS			LAST 28 DAYS			YEAR TO DATE			2 YR	3 YR	4 YR	5 YR
	2020	2019	%CHG	2020	2019	%CHG	2020	2019	%CHG	%CHG	%CHG	%CHG	%CHG
Murder	0	0	*	1	0	*	9	7	29%	50%	-36%	0%	80%
Rape	0	0	*	1	0	*	1	4	-75%	-50%	-90%	-88%	-94%
Robbery	1	1	0%	7	13	-46%	97	116	-16%	-8%	-30%	-33%	-44%
Agg. Assault	2	2	0%	9	11	-18%	126	122	3%	-13%	-9%	-18%	-27%
Burglary	4	4	0%	13	13	0%	211	250	-16%	0%	-20%	-36%	-33%
Felony Theft	1	2	-50%	4	10	-60%	101	91	11%	-3%	-26%	-27%	-26%
Auto Theft	1	2	-50%	12	10	20%	142	153	-7%	-6%	-3%	-26%	10%
TOTAL	9	11	-18%	47	57	-18%	687	743	-8%	-5%	-19%	-30%	-27%
Shooting Incidents	0	1	-100%	2	3	-33%	31	19	63%	55%	-37%	-18%	-9%
Shooting Victims	0	1	-100%	2	3	-33%	40	21	90%	82%	-33%	-9%	-2%
*Juv Shooting Incidents	0	0	*	0	1	-100%	8	3	167%	167%	100%	14%	14%
*Juv Shooting Victims	0	0	*	0	1	-100%	8	3	167%	167%	100%	-11%	-11%
Theft (Misdemeanor)	9	10	-10%	51	49	4%	592	831	-29%	-21%	-30%	-25%	-24%

The above CompStat figures are posted on Monday, two weeks after closing date.

CompStat figures are preliminary and are subject to change through the course of further analysis and review. Crime statistics reflect Delaware Criminal Codes and differ from the crime categories of the FBI Uniform Crime Reporting Program.

* All figures shown in **Juvenile Shooting Incidents** and **Juvenile Shooting Victims** are included in the **Shooting Incidents** and **Shooting Victims**.

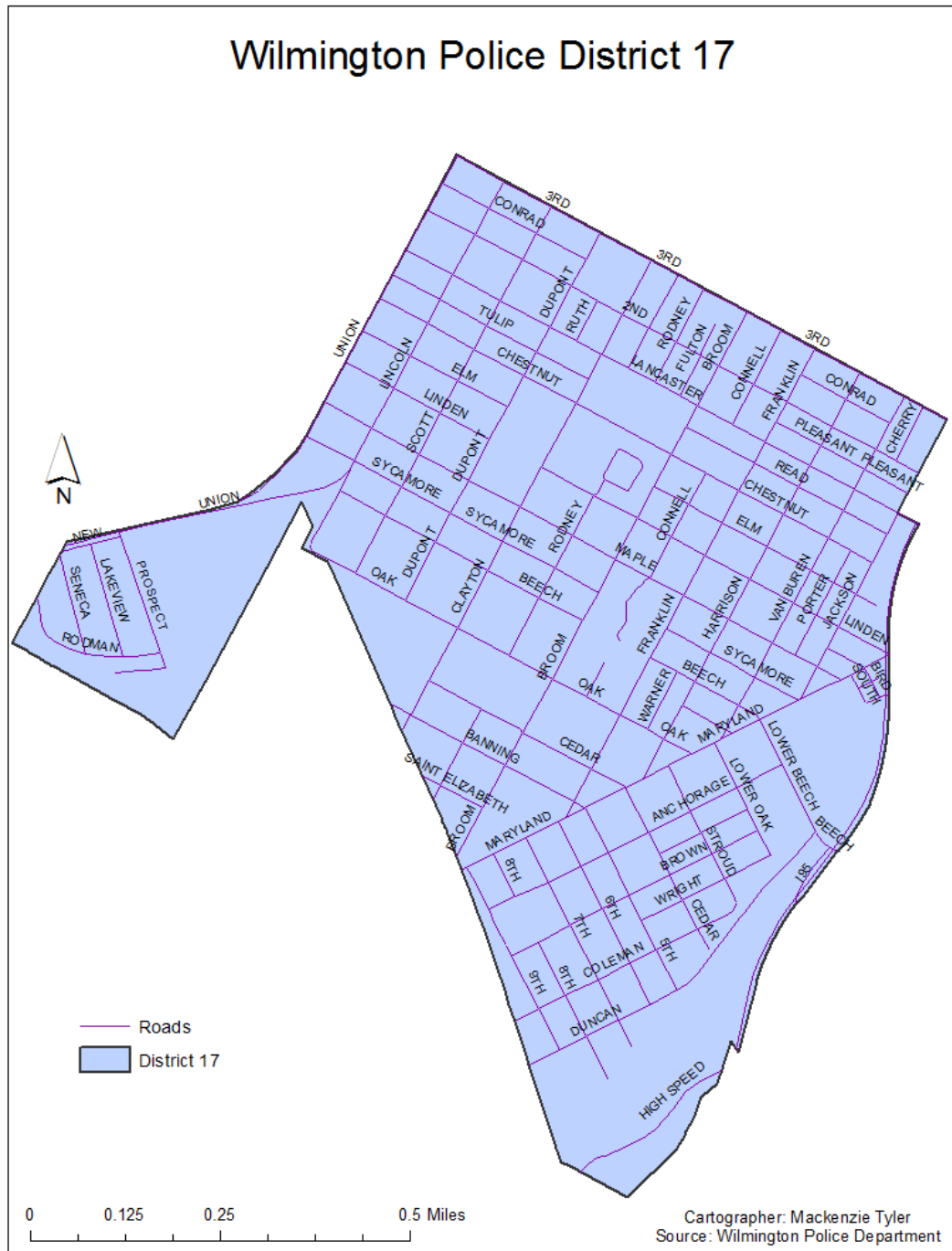


Michael S. Purzycki
Mayor

Wilmington Police Department



Robert J. Tracy
Chief



The above CompStat figures are posted on Monday, two weeks after closing date.

CompStat figures are preliminary and are subject to change through the course of further analysis and review. Crime statistics reflect Delaware Criminal Codes and differ from the crime categories of the FBI Uniform Crime Reporting Program.



Michael S. Purzycki
Mayor

Volume 4

Wilmington Police Department



Robert J. Tracy
Chief

District 17

CompStat

Calendar End of Year

CRIME COMPLAINTS

	LAST 7 DAYS			LAST 28 DAYS			YEAR TO DATE			2 YR	3 YR	4 YR	5 YR
	2020	2019	%CHG	2020	2019	%CHG	2020	2019	%CHG	%CHG	%CHG	%CHG	%CHG
Murder	0	0	*	1	0	*	7	4	75%	75%	-36%	40%	75%
Rape	0	0	*	1	0	*	1	2	-50%	*	-67%	-80%	-86%
Robbery	0	1	-100%	3	7	-57%	52	55	-5%	-7%	-13%	-13%	-32%
Agg. Assault	1	2	-50%	5	8	-38%	72	69	4%	-14%	-17%	-31%	-30%
Burglary	3	0	*	10	4	150%	93	113	-18%	-13%	-34%	-47%	-32%
Felony Theft	0	0	*	1	2	-50%	35	29	21%	17%	-27%	-22%	-17%
Auto Theft	1	2	-50%	6	4	50%	57	64	-11%	-17%	0%	-29%	19%
TOTAL	5	5	0%	27	25	8%	317	336	-6%	-9%	-22%	-33%	-24%
Shooting Incidents	0	1	-100%	2	3	-33%	18	12	50%	29%	-42%	-33%	-33%
Shooting Victims	0	1	-100%	2	3	-33%	24	14	71%	50%	-38%	-27%	-23%
*Juv Shooting Incidents	0	0	*	0	1	-100%	5	3	67%	150%	400%	-29%	0%
*Juv Shooting Victims	0	0	*	0	1	-100%	5	3	67%	150%	400%	-44%	-29%
Theft (Misdemeanor)	2	0	*	15	10	50%	176	188	-6%	-11%	-22%	-14%	-27%

The above CompStat figures are posted on Monday, two weeks after closing date.

CompStat figures are preliminary and are subject to change through the course of further analysis and review. Crime statistics reflect Delaware Criminal Codes and differ from the crime categories of the FBI Uniform Crime Reporting Program.

* All figures shown in **Juvenile Shooting Incidents** and **Juvenile Shooting Victims** are included in the **Shooting Incidents** and **Shooting Victims**.

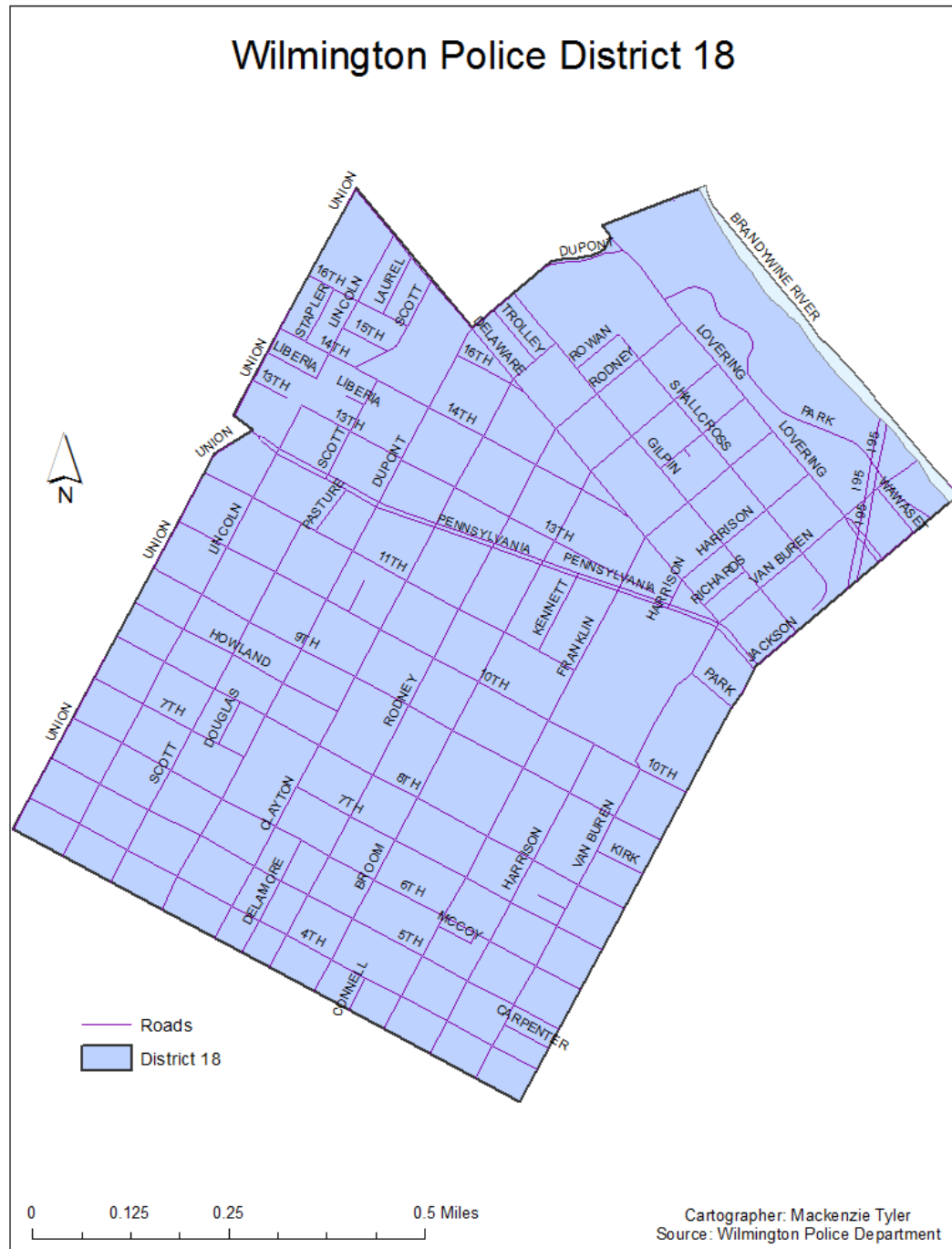


Michael S. Purzycki
Mayor

Wilmington Police Department



Robert J. Tracy
Chief



The above CompStat figures are posted on Monday, two weeks after closing date.

CompStat figures are preliminary and are subject to change through the course of further analysis and review. Crime statistics reflect Delaware Criminal Codes and differ from the crime categories of the FBI Uniform Crime Reporting Program.



Michael S. Purzycki
Mayor

Volume 4

Wilmington Police Department



Robert J. Tracy
Chief

District 18

CompStat

Calendar End of Year

CRIME COMPLAINTS

	LAST 7 DAYS			LAST 28 DAYS			YEAR TO DATE			2 YR	3 YR	4 YR	5 YR
	2020	2019	%CHG	2020	2019	%CHG	2020	2019	%CHG	%CHG	%CHG	%CHG	%CHG
Murder	0	0	*	0	0	*	2	3	-33%	0%	-33%	-50%	100%
Rape	0	0	*	0	0	*	0	2	-100%	-100%	-100%	-100%	-100%
Robbery	1	0	*	3	5	-40%	38	44	-14%	9%	-22%	-34%	-44%
Agg. Assault	1	0	*	3	3	0%	41	39	5%	-16%	5%	5%	-32%
Burglary	0	4	-100%	1	7	-86%	74	86	-14%	16%	-8%	-21%	-26%
Felony Theft	0	1	-100%	1	7	-86%	31	42	-26%	-28%	-37%	-51%	-38%
Auto Theft	0	0	*	5	4	25%	53	59	-10%	-9%	-2%	-23%	-2%
TOTAL	2	5	-60%	13	26	-50%	239	275	-13%	-5%	-14%	-28%	-30%
Shooting Incidents	0	0	*	0	0	*	12	6	100%	140%	-29%	9%	71%
Shooting Victims	0	0	*	0	0	*	15	6	150%	200%	-25%	36%	50%
*Juv Shooting Incidents	0	0	*	0	0	*	2	0	*	100%	0%	*	0%
*Juv Shooting Victims	0	0	*	0	0	*	2	0	*	100%	0%	*	0%
Theft (Misdemeanor)	6	4	50%	26	20	30%	312	433	-28%	-14%	-11%	-10%	-13%

The above CompStat figures are posted on Monday, two weeks after closing date.

CompStat figures are preliminary and are subject to change through the course of further analysis and review. Crime statistics reflect Delaware Criminal Codes and differ from the crime categories of the FBI Uniform Crime Reporting Program.

* All figures shown in **Juvenile Shooting Incidents** and **Juvenile Shooting Victims** are included in the **Shooting Incidents** and **Shooting Victims**.

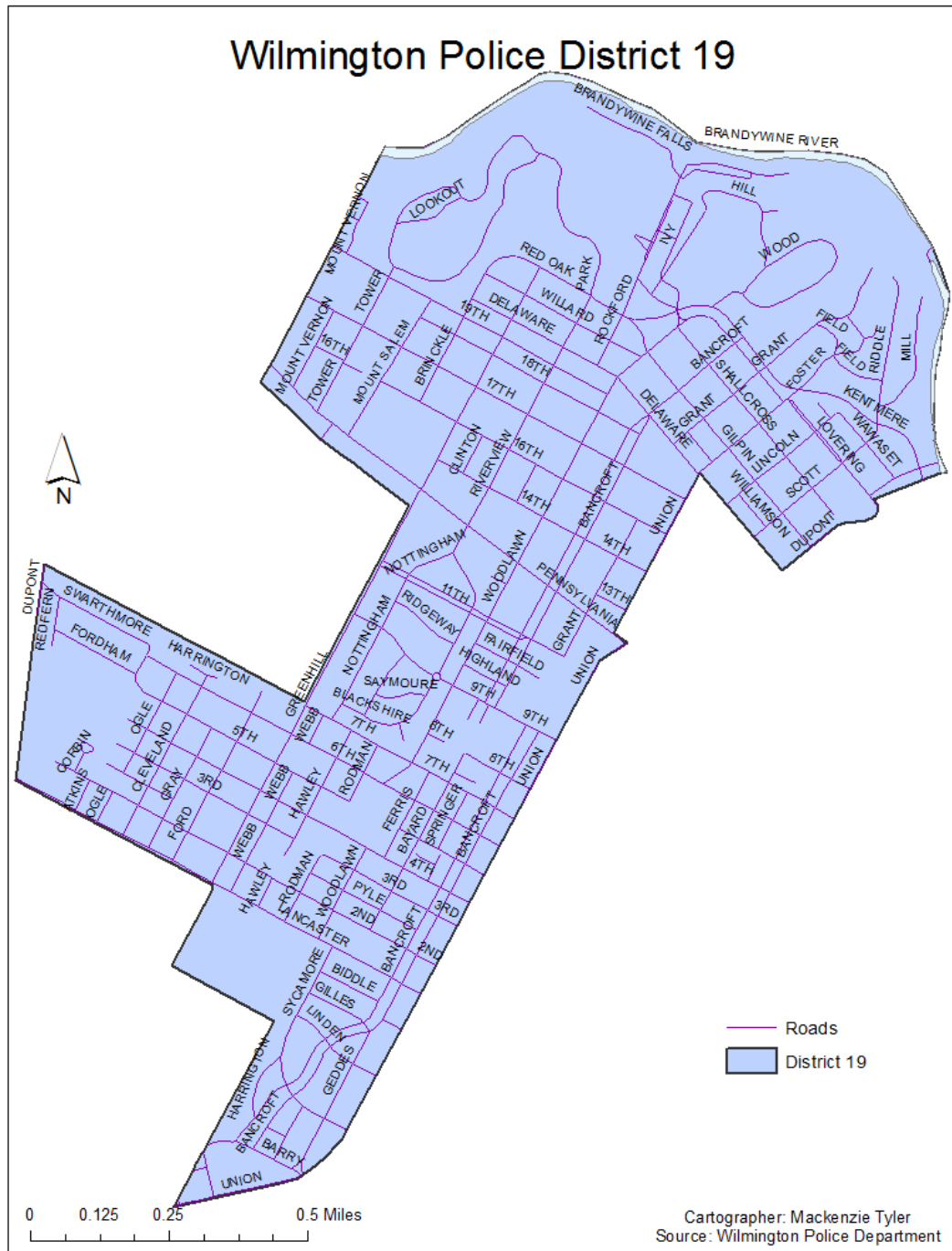


Michael S. Purzycki
Mayor

Wilmington Police Department



Robert J. Tracy
Chief



The above CompStat figures are posted on Monday, two weeks after closing date.

CompStat figures are preliminary and are subject to change through the course of further analysis and review. Crime statistics reflect Delaware Criminal Codes and differ from the crime categories of the FBI Uniform Crime Reporting Program.



Michael S. Purzycki
Mayor

Volume 4

Wilmington Police Department



Robert J. Tracy
Chief

District 19

CompStat

Calendar End of Year

CRIME COMPLAINTS

	LAST 7 DAYS			LAST 28 DAYS			YEAR TO DATE			2 YR	3 YR	4 YR	5 YR
	2020	2019	%CHG	2020	2019	%CHG	2020	2019	%CHG	%CHG	%CHG	%CHG	%CHG
Murder	0	0	*	0	0	*	0	0	*	*	*	*	*
Rape	0	0	*	0	0	*	0	0	*	-100%	-100%	*	-100%
Robbery	0	0	*	1	1	0%	7	17	-59%	-50%	-77%	-73%	-75%
Agg. Assault	0	0	*	1	0	*	13	14	-7%	18%	0%	30%	30%
Burglary	1	0	*	2	2	0%	44	51	-14%	7%	0%	-28%	-44%
Felony Theft	1	1	0%	2	1	100%	35	20	75%	13%	-13%	13%	-20%
Auto Theft	0	0	*	1	2	-50%	32	30	7%	33%	-9%	-24%	19%
TOTAL	2	1	100%	7	6	17%	131	132	-1%	7%	-20%	-23%	-30%
Shooting Incidents	0	0	*	0	0	*	1	1	0%	0%	0%	*	*
Shooting Victims	0	0	*	0	0	*	1	1	0%	0%	0%	*	*
*Juv Shooting Incidents	0	0	*	0	0	*	1	0	*	*	0%	*	*
*Juv Shooting Victims	0	0	*	0	0	*	1	0	*	*	0%	*	*
Theft (Misdemeanor)	1	6	-83%	10	19	-47%	104	210	-50%	-44%	-60%	-57%	-41%

The above CompStat figures are posted on Monday, two weeks after closing date.

CompStat figures are preliminary and are subject to change through the course of further analysis and review. Crime statistics reflect Delaware Criminal Codes and differ from the crime categories of the FBI Uniform Crime Reporting Program.

* All figures shown in **Juvenile Shooting Incidents** and **Juvenile Shooting Victims** are included in the **Shooting Incidents** and **Shooting Victims**.