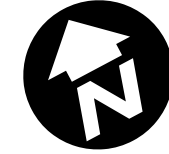
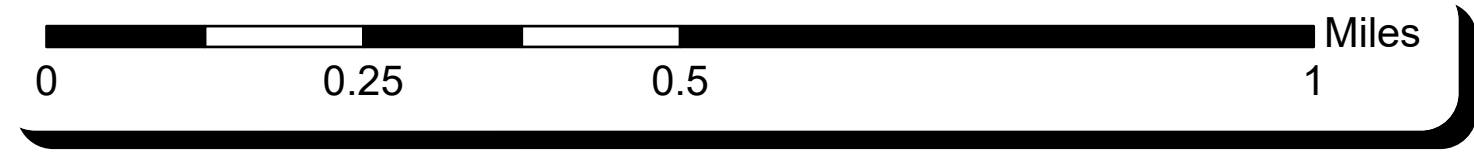


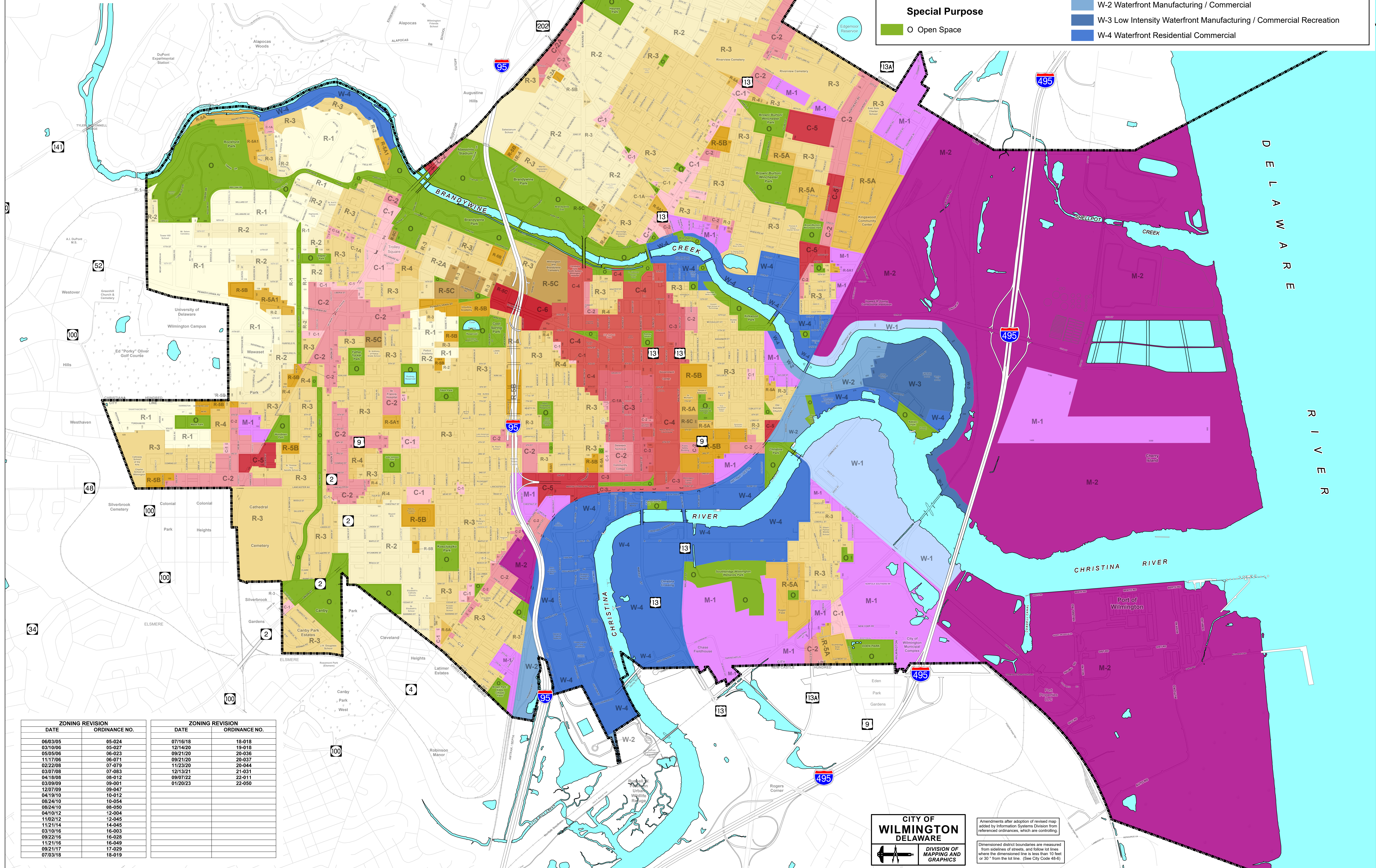


CITY OF WILMINGTON ZONING MAP

THIS MAP IS SUPPLEMENTED BY 'SUPPLEMENTAL BUILDING ZONE MAP - FLOOD DISTRICTS AND HISTORIC DISTRICTS'



- | | |
|---|--|
| Commercial | Residential |
| C-1 Neighborhood Shopping | R-1 One-Family Detached Dwellings |
| C-1-A Neighborhood Commercial | R-2 One-Family Semi-Detached Dwellings |
| C-2 Secondary Business Commercial Centers | R-2-A One-Family Detached and Semi-detached Dwellings with Conversions |
| C-2-A Secondary Office and Business Centers | R-3 One-Family Row Houses |
| C-3 Central Retail | R-4 Row Houses with Conversions |
| C-4 Central Office | R-5-A Low Density Apartment Houses |
| C-5 Heavy Commercial | R-5-A-1 Low-Medium Density Apartment Houses |
| C-6 Special Commercial | R-5-B Medium Density Apartment Houses |
| | R-5-C High Density Apartment Houses |
| Manufacturing and Industrial | Waterfront |
| M-1 Light Manufacturing | W-1 Waterfront Manufacturing |
| M-2 General Industrial | W-2 Waterfront Manufacturing / Commercial |
| | W-3 Low Intensity Waterfront Manufacturing / Commercial Recreation |
| Special Purpose | W-4 Waterfront Residential Commercial |
| O Open Space | |



ZONING REVISION		ZONING REVISION	
DATE	ORDINANCE NO.	DATE	ORDINANCE NO.
06/03/05	05-024	07/16/18	18-018
03/10/06	05-027	12/14/20	19-018
05/05/06	06-023	09/21/20	20-036
11/17/06	06-071	09/21/20	20-037
02/22/08	07-079	11/23/20	20-044
03/07/08	07-083	12/13/21	21-031
04/18/08	08-012	09/07/22	22-011
03/09/09	09-001	01/20/23	22-050
12/07/09	09-047		
04/19/10	10-012		
08/24/10	10-054		
08/24/10	08-050		
04/10/12	12-004		
11/02/12	12-045		
11/21/14	14-045		
03/10/16	16-003		
09/22/16	16-028		
11/21/16	16-049		
09/21/17	17-029		
07/03/18	18-019		

CITY OF WILMINGTON DELAWARE DIVISION OF MAPPING AND GRAPHICS

Amendments after adoption of revised map added by Information Systems Division from referenced ordinances, which are controlling. Dimensioned district boundaries are measured from sidelines of streets, and follow lot lines where the dimensioned line is less than 10 feet or 30' from the lot line. (See City Code 48-6)