



Southbridge Civic Association Meeting— December 20, 2016

Wetlands Project Update



Historical Context

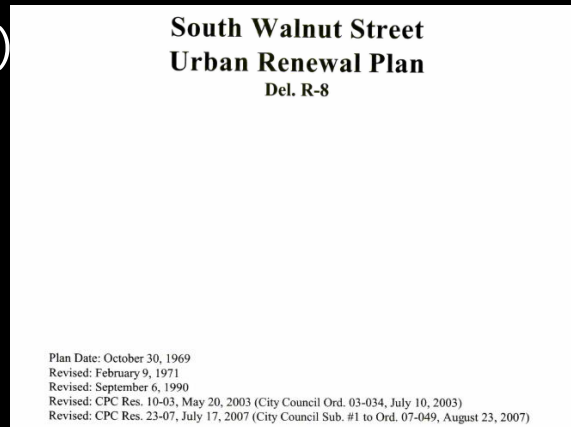
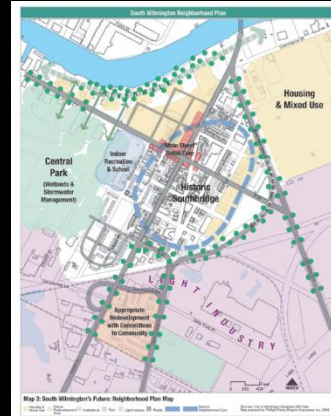
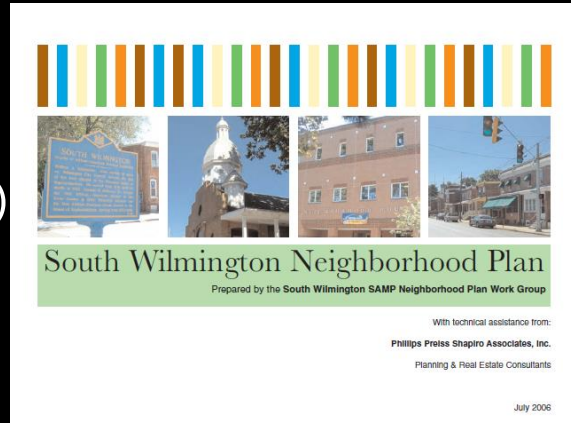
Existing Plans

- South Wilmington Strategic Area Management Plan (2006)
- South Wilmington Urban Renewal Plan (2007)

South Wilmington Wetland Committee Formed (2010)

Active Community Groups

- Southbridge Civic Association
- South Wilmington Planning Network



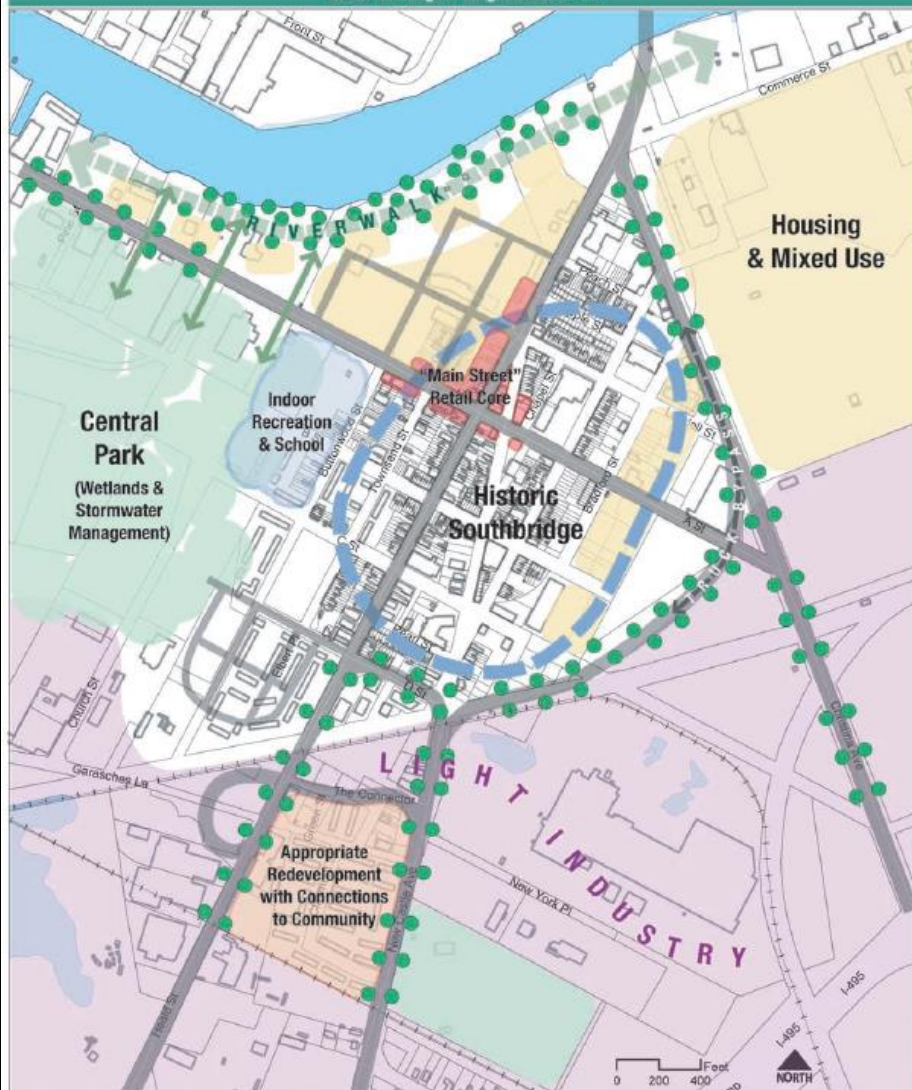


Vision Statement



Take a checkerboard of historic homes, public housing, waterfront luxury housing and mixed-use sites, brownfields, bisecting corridors, floodplains and wetlands, and create a single neighborhood rich in heritage, racial and social diversity, superior ecology and shared community amenities, including a substantial new park at the heart of the neighborhood.





Map 3: South Wilmington's Future: Neighborhood Plan Map

Housing & Mixed Use
 Future Redevelopment Area
 Institutional
 Park
 Light Industry
 Roads
 Historic Neighborhood Core

Sources: City of Wilmington Delaware GIS Data
Map prepared by Phillips Preiss Shapiro Associates, Inc. 2009



Map 14. Parks and Open Space

Parks (public)
 Waterbody
 Bridges

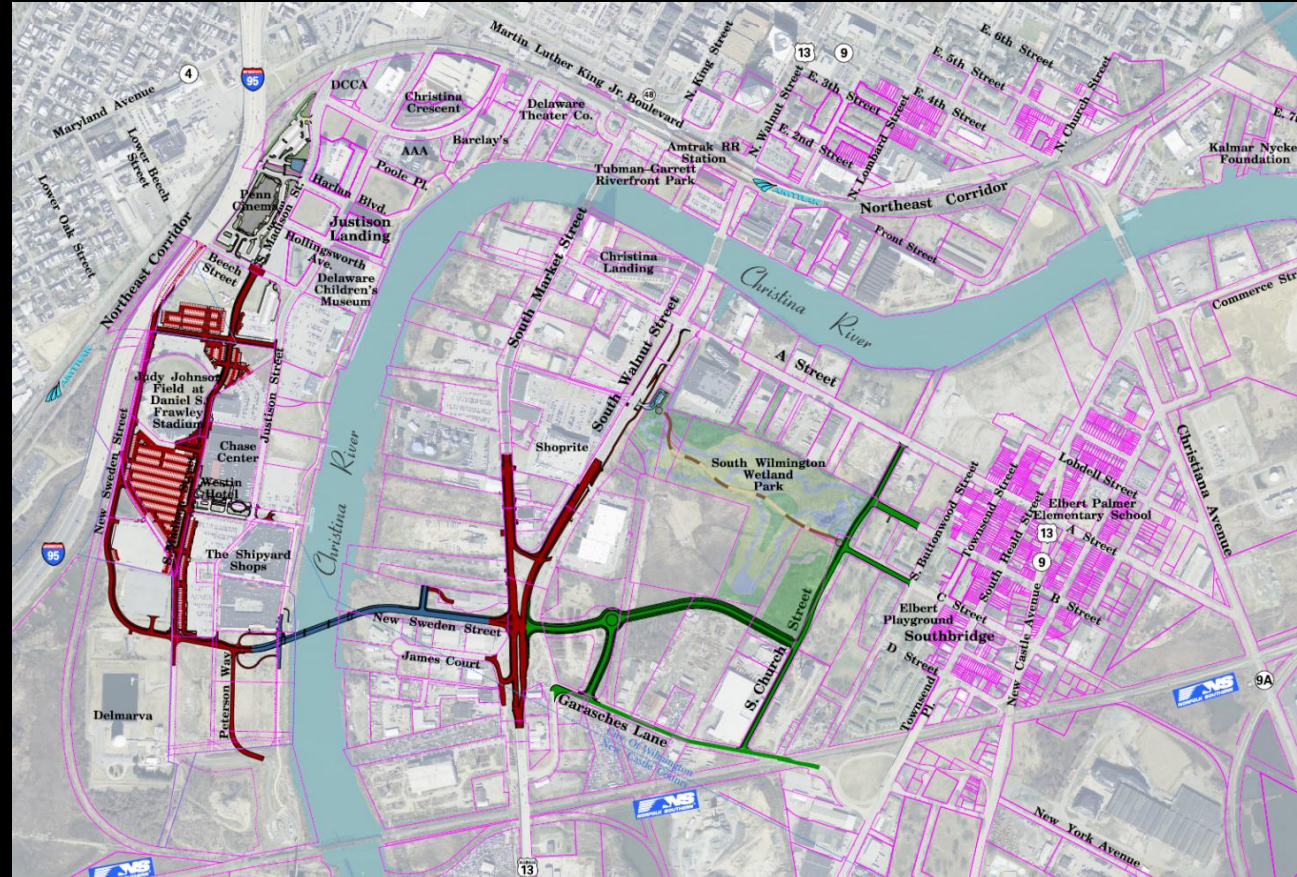
Henrietta Johnson Medical Center
 Elbert-Palmer Elementary School

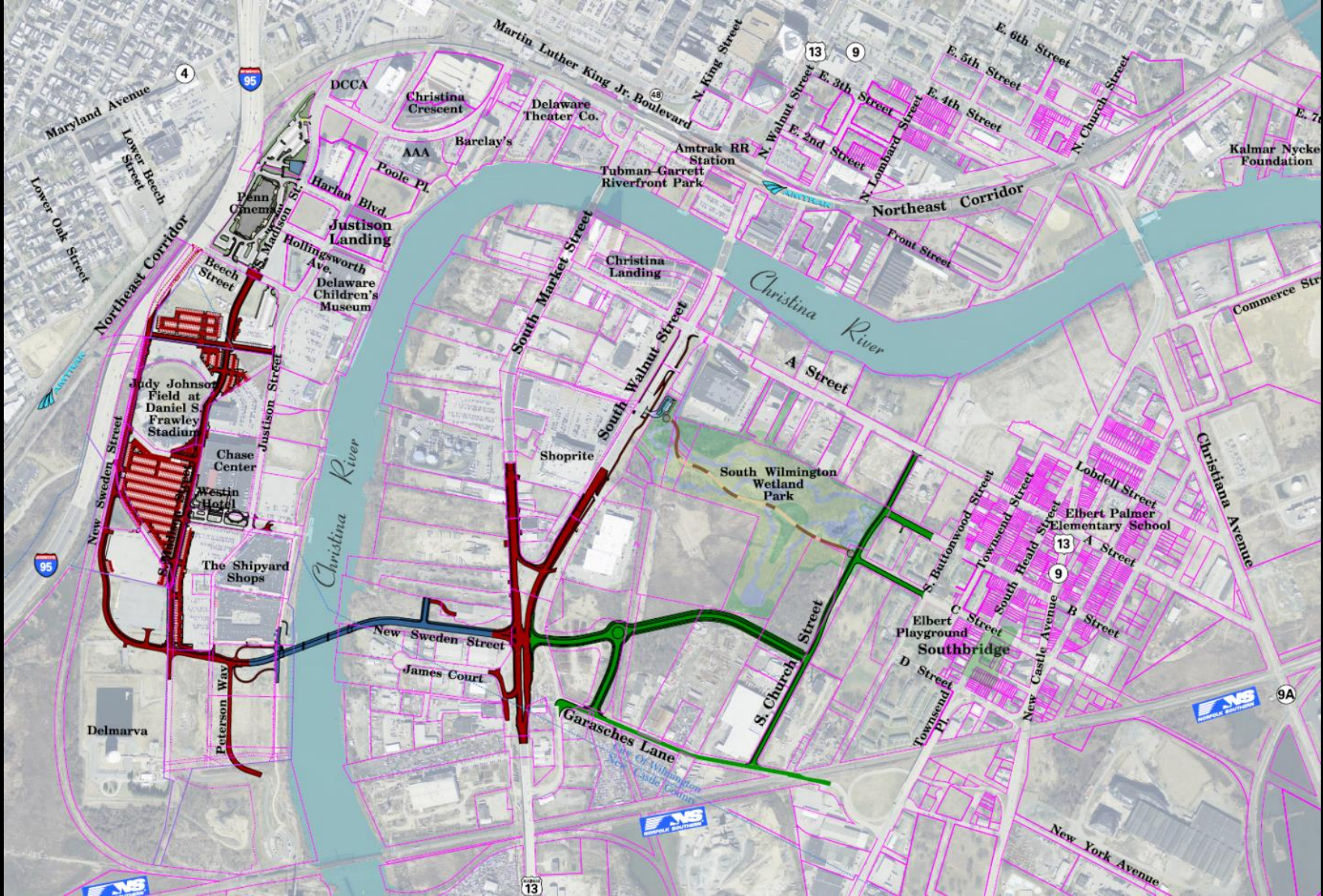
Sources: City of Wilmington
 Delaware State GIS Data
 Phillips Preiss Shapiro Associates,
 Field Survey, November 2005
 Map Prepared by:
 Phillips Preiss Shapiro Associates, Inc.
 November 2005

Project Integration

South Wilmington

- Wetlands Project
- Christina River Bridge & Approaches
- South Wilmington Transportation Network





Maryland Avenue
Lower Beech Street
Lower Oak Street

4



DCCA

Christina Crescent

Barclay's

Delaware Theater Co.

AAA

Poole Pl.

Harlan Blvd.

Justison Landing

Hollingsworth Ave.

Delaware Children's Museum

Amtrak RR Station

Tubman-Garrett Riverfront Park

13

9

E. 6th Street

E. 5th Street

E. 4th Street

E. 3rd Street

E. 2nd Street

Northeast Corridor

Front Street

Kalmar Nyckel Foundation

Commerce Street

Christina River

A Street

South Market Street

South Walnut Street

Shoprite

South Wilmington Wetland Park

Christiana Avenue

Loddell Street

Elbert Palmer Elementary School

A Street

B Street

C Street

Elbert Playground

Southbridge

D Street

Townsend Pl.

S. Buttwood Street

Townsend Street

South Head Street

New Castle Avenue

9A

New York Avenue

Judy Johnson Field at Daniel S. Frawley Stadium

Chase Center

Westin Hotel

The Shipyard Shops

I-95 shield

New Sweden Street

Peterson Way

Delmarva

Christina River

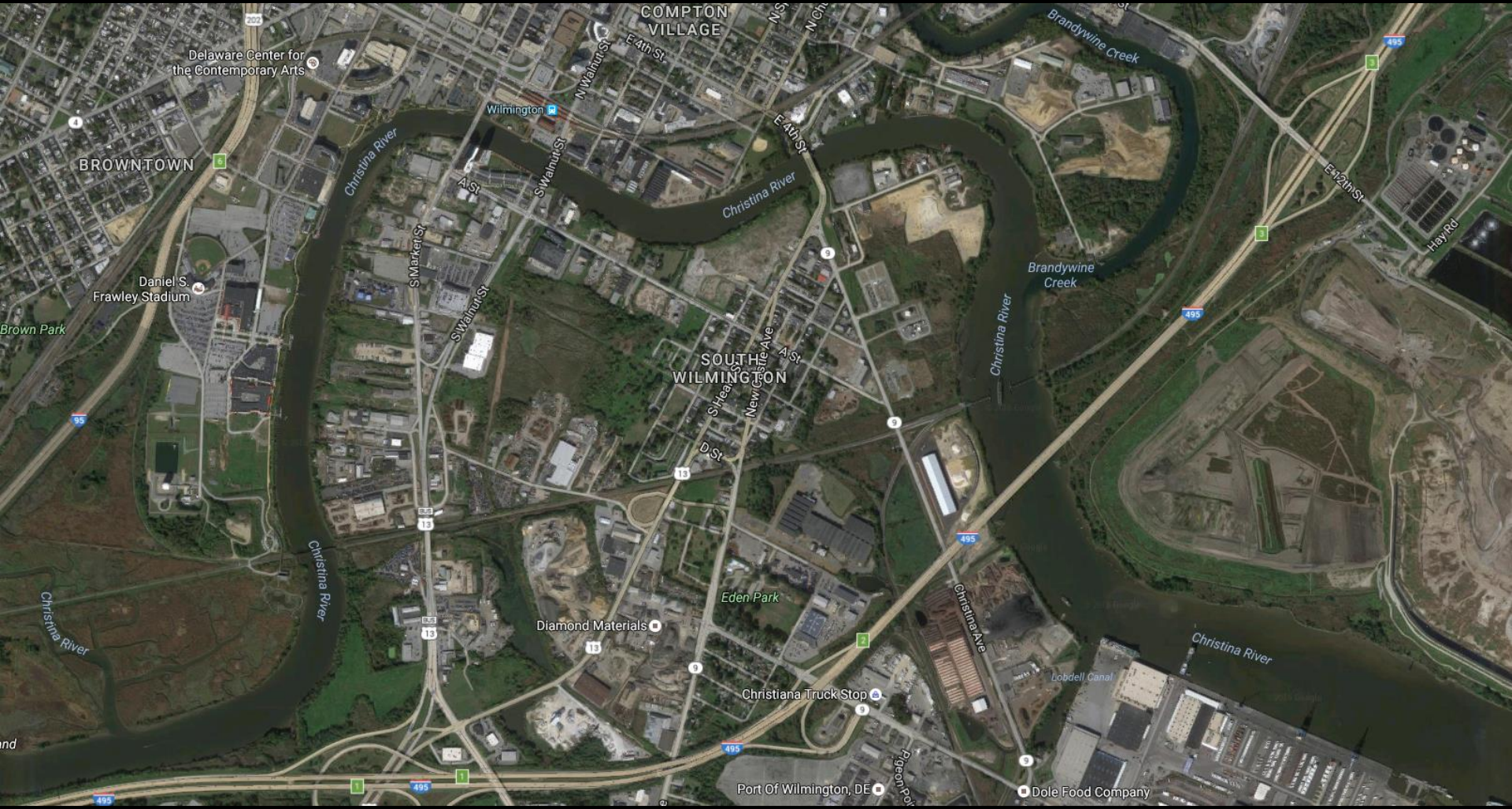
New Sweden Street

James Court

Garasches Lane

City of Wilmington
Water Control Center





Delaware Center for the Contemporary Arts

COMPTON VILLAGE

BROWNTOWN

Daniel S. Frawley Stadium

SOUTH WILMINGTON

Diamond Materials

Eden Park

Christiana Truck Stop

Port of Wilmington, DE

Dole Food Company

S Market St

S Walnut St

W Walnut St

E 4th St

E 4th St

New Circle Ave

D St

Christiana Ave

E 12th St

Hay Rd

Christina River

Christina River

Christina River

Brandywine Creek

Brandywine Creek

Christina River

Lobdell Canal

202

95

95

13

13

13

13

495

495

495

495

495

1

Wilmington

1

1

1

1

1

1

1

1

1

1

1

1

1

1

1

1

1

1

1

1

1

1

1

1

1

1

1

1

1

1

1

1

1

1

1

1

1

1

1

1

1

1

1

1

1

1

1

1

1

1

1

1

1

1

1

1

1

1

1

1

1

1

1

1

1

1

1

1

1

1

1

1

1

1

1

1

1

1

1

1

1

1

1

1

1

1

1

1

1

1

1

1

1

1

1

1

1

1

1

1

1

1

1

1

1

1

1

1

1

1

1

1

1

1

1

1

1

1

1

1

1

1

1

1

1

1

1

1

1

1

1

1

1

1

1

1

1

1

1

1

1

1

1

1

1

1

1

1

1

1

1

1

1

1

1

1

1

1

1

1

1

1

1

1

1

1

1

1

1

1

1

1

1

1

1

1

1

1

1

1

1

1

1

1

1

1

1

1

1

1

1

1

1

1

1

1

1

1

1

1

1

1

1

1

1

1

1

1

1

1

1

1

1

1

1

1

1

1

1

1

1

1

1

1

1

1

1

1

1

1

1

1

1

1

1

1

1

1

1

1

1

1

1

1

1

1

1

1

1

1

1

1

1

1

1

1

1

1

1

1

1

1

1

1

1

1

1

1

1

1

1

1

1

1

1

1

1

1

1

1

1

1

1

1

1

1

1

1

1

1

1

1

1

1

1

1

1

1

1

1

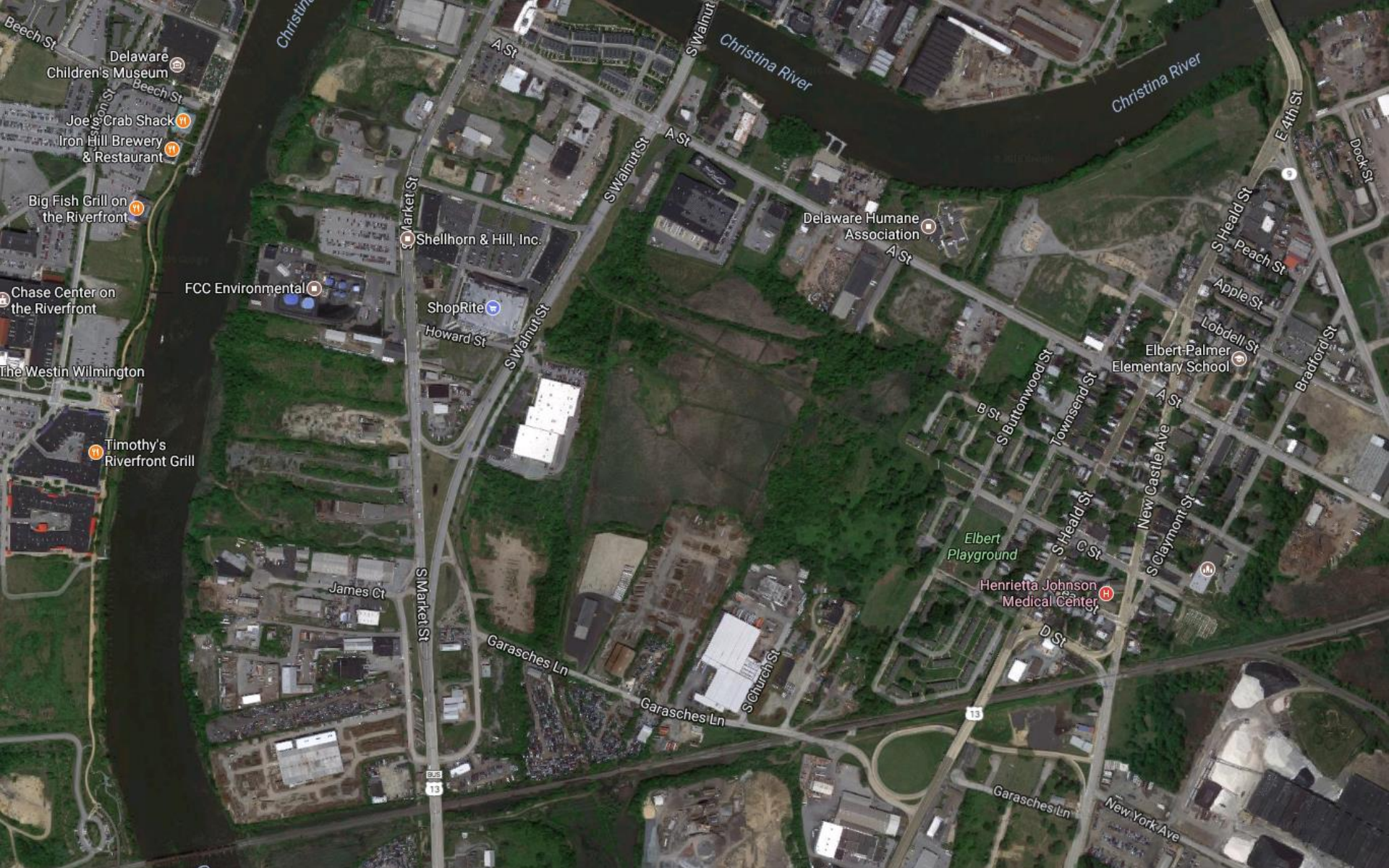
1

1

1

1

1



Christina River

Christina River

Christina River

Delaware Children's Museum
Joe's Crab Shack
Iron Hill Brewery & Restaurant

Big Fish Grill on the Riverfront

Chase Center on the Riverfront

The Westin Wilmington

Timothy's Riverfront Grill

FCC Environmental

Shellhorn & Hill, Inc.

ShopRite

Delaware Humane Association

Elbert Palmer Elementary School

Elbert Playground

Henretta Johnson Medical Center

James Ct

Garasches Ln

Garasches Ln

13

Garasches Ln

New York Ave

Beech St

Beech St

A St

A St

A St

S Heald St

Peach St

Apple St

Lobdell St

A St

S Heald St

C St

New Castle Ave

S Claymont St

D St

S Market St

S Walnut St

S Walnut St

S Walnut St

E 4th St

Dock St

Bradford St

S Church St

S Burtonwood St

Townsend St

B St

S Heald St

A St

S Claymont St

S Claymont St

S Claymont St

S Claymont St

S Claymont St

S Claymont St

S Claymont St

S Claymont St

S Claymont St

S Claymont St

S Claymont St

S Claymont St

S Claymont St

BUS 13

13

13

13



S Market St

Shellhorn & Hill, Inc.

Western Union

Aaron's

ShopRite

Howard St

S Market St

Winner Premier Collision Center

Junior Achievement of Delaware

Diamond Chemical & Supply Company

S Walnut St

Delaware Humane Association

A St

Integrity Staffing Solutions

A St

A St

S Burtonwood St

Townsend St

Mt Joy United Methodist Church

B St

Shiloh Apostolic Church

C St

S Burtonwood St

B St

Elbert Playground

Dugan Park

Kosowsky's Market

Henrietta Johnson Medical Center

S Head St

S Head St

Townsend St

D St

New Castle Ave

Fibre Processing Corporation

Garasches, Inc.

Wetlands Park

Project Goals

- Mitigate flooding
- Improve water quality
- Restore a low functioning tidal wetland
- Clean up a brownfield
- Create a safe and attractive wetlands park
- Reduce mosquito breeding grounds

Wetlands Park

Project Opportunities

- Implement South Walnut Urban Renewal Plan and SAMP
- Create park for community
- Connect Southbridge to Riverfront
- Economic development: create jobs, increase property tax base
- Eliminates one of the largest brownfields in City

Community Engagement

- Annual Southbridge Civic Association meeting updates (most recent Sept. 2016)
- Summer 2014 Southbridge Day
- September 2015 Public Workshop



Southbridge plan: flood control, better access

Molly Murray, The News Journal 7:29 a.m. EDT September 24, 2015



Susan Lova, a planner with DNREC, discusses a flood plain map of the Southbridge section of Wilmington with Paul Walker, who grew up in the neighborhood, during an informational session at Ebert-Palmer Elementary School Wednesday.
(Photo: WILLIAM BRETZGER/THE NEWS JOURNAL)

Buy Photo



Rising seas overwhelm Delaware tide gates

Southbridge's aging infrastructure can't keep out floodwaters – and locals fear sewage, industrial contamination

October 16, 2015 5:00AM ET

by Natasja Sheriff

SOUTHBRIDGE, Delaware – Down by the railroad tracks that cut



Walnut St. Gateway
Perspective

Wetland
Perspective

Gateway
Perspective

● Pole

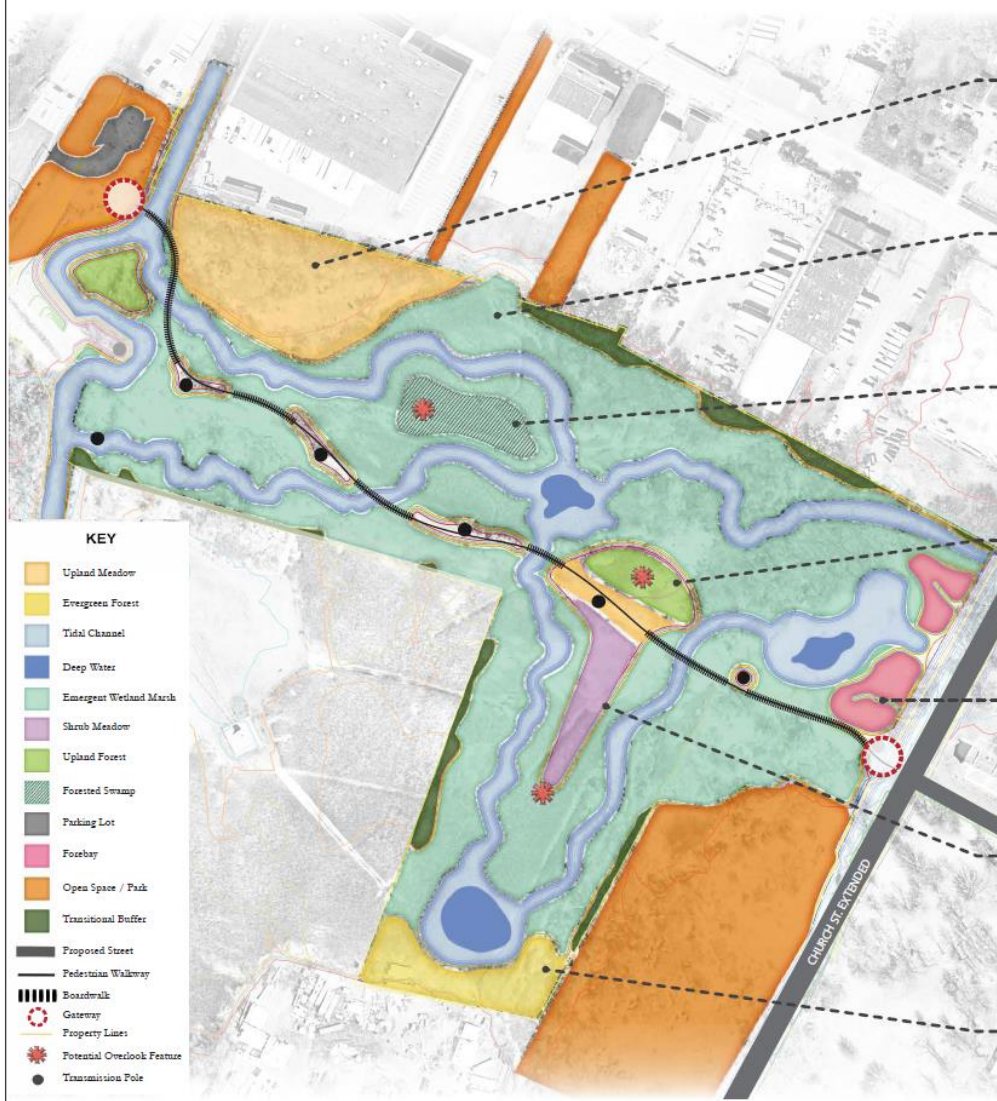


Perspective Locations
Wilmington Wetland Park
December 13, 2016









KEY

- Upland Meadow
- Evergreen Forest
- Tidal Channel
- Deep Water
- Emergent Wetland Marsh
- Shrub Meadow
- Upland Forest
- Forested Swamp
- Parking Lot
- Forebay
- Open Space / Park
- Transitional Buffer
- Proposed Street
- Pedestrian Walkway
- Boardwalk
- Gateway
- Property Lines
- Potential Overlook Feature
- Transmission Pole



Upland Meadow



- Red Top
- Big Bluestem
- Dear Tongue
- Annual Ryegrass
- Eastern Smooth Broomrape
- Black-eyed Susan

- Agrostis alba*
- Andropogon gerardii*
- Dichanthium sibiricum*
- Lolium multiflorum*
- Panicum rugosum*
- Panicum laetiflorum*
- Rudbeckia hirta*

- Indigofera pastora*
- Rhus typhina*
- Rhus glabra*
- Rhus glabra*
- Lonicera nigra*
- Viburnum dentatum*
- Solidago peruviana*



Emergent Wetland



- (6) Yellow Water-Lily
- Arrow Arum
- (7) Dickcissel
- Big-Leaved Arrowhead
- Common Three Square
- Common Butterbush

- Najas lunata*
- Peltandra virginica*
- Peltandra virginica*
- Sagittaria latifolia*
- Scheuchzeria palustris*
- Cephalanthus occidentalis*

- (8) Marsh Hibiscus
- (9) Rice Cutgrass
- Sweet Flag
- (10) New England Arrow
- Blueflag Iris

- Hibiscus moscheutos*
- Lernaea erythraea*
- Aster idaeus*
- Aster novae-angliae*
- Iris versicolor*



Forested Swamp



- (11) Red Maple
- (12) Sweet Gum
- (13) Sweetbay
- (14) Blackgum
- (15) Willow Oak

- Acer rubrum*
- Liquidambar styraciflua*
- Magnolia virginiana*
- Nyssa sylvatica*
- Quercus phellos*



Upland Forest



- (16) American Beech
- (17) Pigmy Hickory
- Sweet Birch
- (18) Common Pinestem
- (19) Northern Red Oak
- (20) Tule Poplar
- White Oak

- Fagus grandifolia*
- Carya glabra*
- Betula lenta*
- Diagnos virginiana*
- Quercus rubra*
- Liquidambar styraciflua*
- Quercus alba*



Forebay



- (21) Blue Flag Iris
- (22) Canada Rush
- (23) Soft Rush
- (24) Wood Grass
- (25) Broadleaf Cattail

- Iris versicolor*
- Juncus canadensis*
- Juncus glauca*
- Scirpus americanus*
- Typha latifolia*



Shrub Meadow



- (26) Southern Arrowwood
- (27) Silky Dogwood
- (28) Northern Highberry
- (29) Winesherry
- (30) Black Elderberry

- Viburnum dentatum*
- Cornus amomum*
- Myrica pensylvanica*
- Ilex verticillata*
- Sambucus nigra*



Evergreen Forest



- (31) Inkberry
- (32) American Holly
- (33) Loblolly Pine

- Ilex glabra*
- Ilex opaca*
- Pinus taeda*





Call to action

- Download Report It Resolve It app and report flooding in your area
 - Information available
- Capital Budget Amendment approval Fall 2016?
 - Community support needed-letters to elected officials
- Amato Park Design this spring
 - Information will be provide through Southbridge Civic Association
- Spread the word about Environmental Jobs Training



REPORT IT RESOLVE IT

Online and Mobile Service Request System for the City of Wilmington

Potholes

Litter

MISSED TRASH

See an Issue

Snap a Photo

Select the Location

Select the Issue

Submit It

Track it





Environmental Job Training

For more information

Contact:

Lisa Graham
lgraham@westendnh.org
302-658-4171
710 N. Lincoln St
Wilmington, DE 19805

Visit:

www.westendnh.org