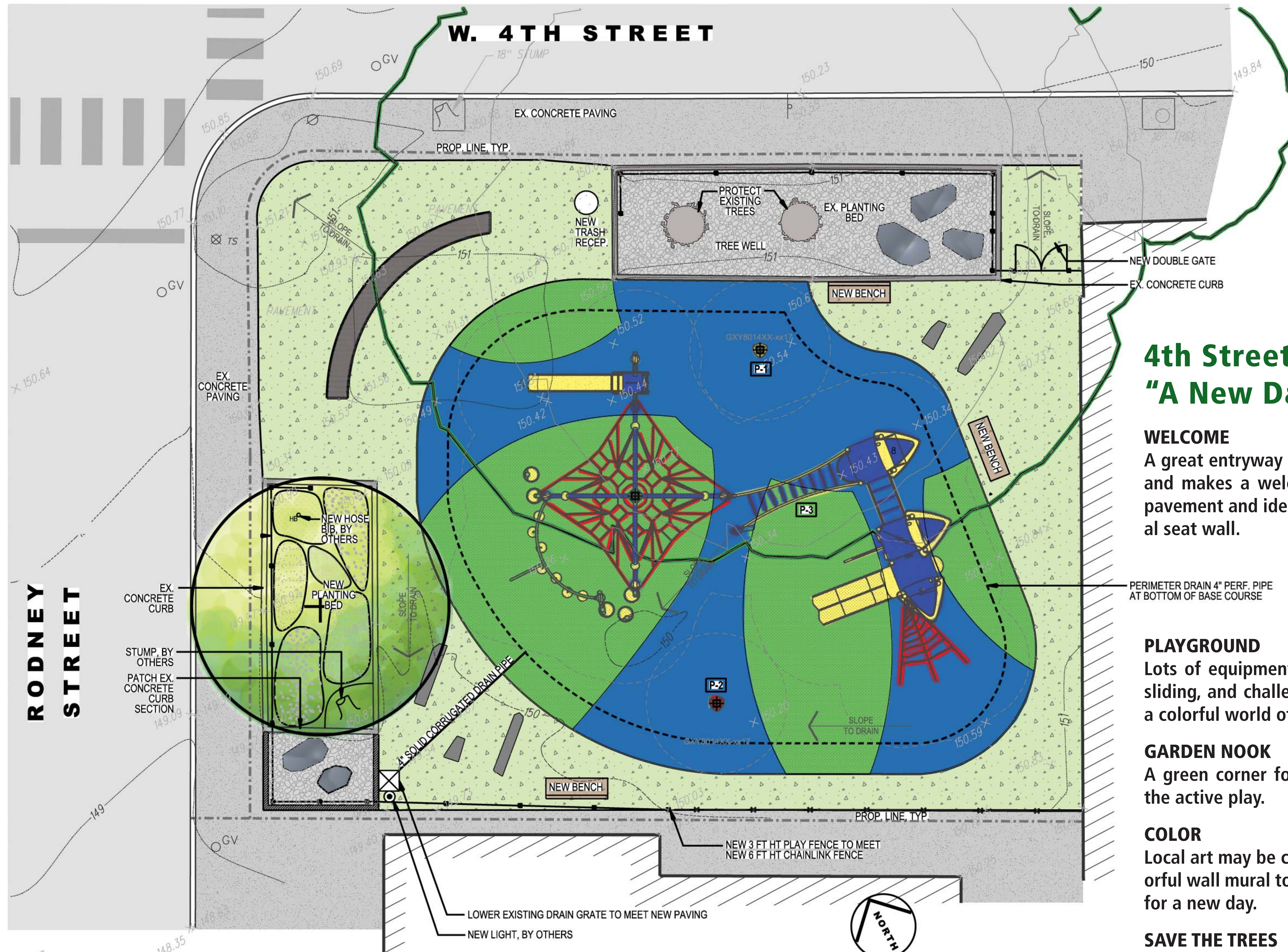




# 4th Street Park Playground



## Monday, May 8, 2017 • Groundbreaking Ceremony



### 4th Street Park: "A New Day"

#### WELCOME

A great entryway defines the edge of play and makes a welcome sign with colorful pavement and identity graphics on a casual seat wall.

#### PLAYGROUND

Lots of equipment for climbing, spinning, sliding, and challenging adventures set in a colorful world of its own.

#### GARDEN NOOK

A green corner for kids to sit apart from the active play.

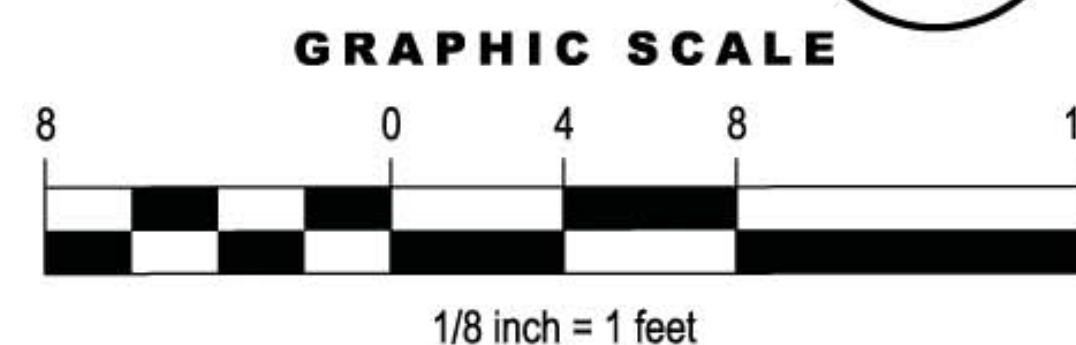
#### COLOR

Local art may be celebrated through a colorful wall mural to create a strong identity for a new day.

#### SAVE THE TREES

Mature trees create an established sense of place so investment will be made to keep them.

1 4TH STREET PARK PLAYGROUND  
SCALE: 1/8" = 1'-0"

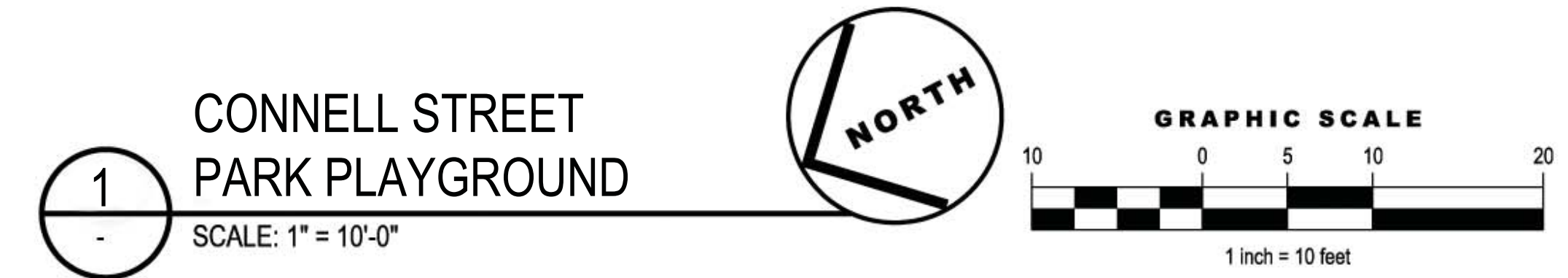
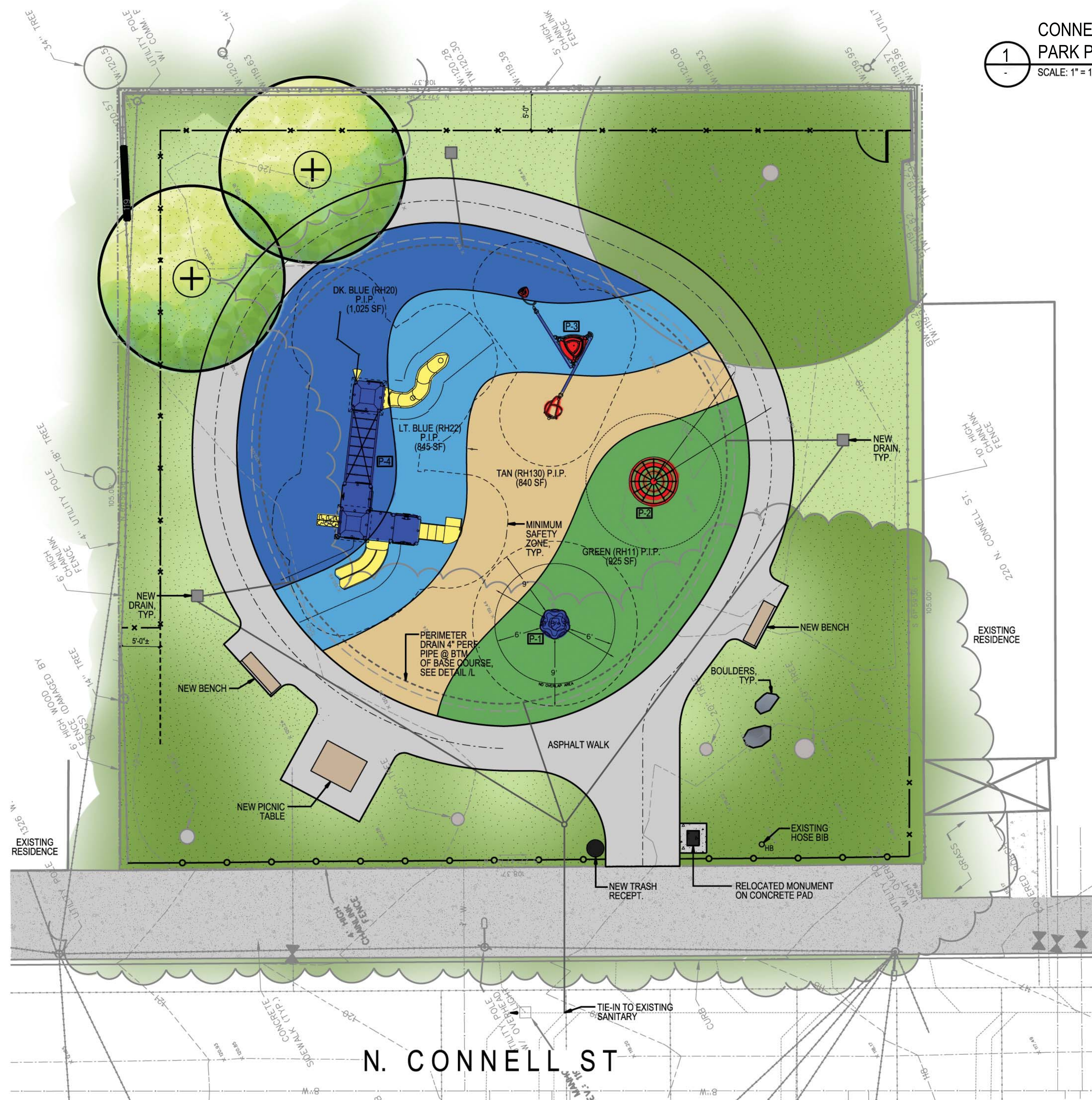




# Connell Street Park Playground



## Monday, May 8, 2017 • Groundbreaking Ceremony



### Connell Street Park: "A Neighborhood Oasis"

#### PLAYGROUND

Lots of equipment to invite climbing, spinning, sliding, and challenging adventures set in a colorful island within the park.

#### LOOP

A pathway all around the park for racing laps or taking a thoughtful walk.

#### WOODLAND NOOK

A shady green corner to sit under trees.

#### PICNIC SPOT

Tables to set with a meal or a game of checkers next to a colorful wall mural—a place to gather with friends and family.

#### GATHERING CIRCLE

A circular seat wall to gather for a meeting, pause from play, or have a quiet conversation.